

Product datasheet for **TA357921**

VPS26 (VPS26A) Rabbit Polyclonal Antibody

Product data:

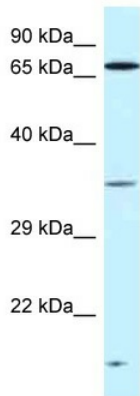
Product Type:	Primary Antibodies
Applications:	WB
Reactivity:	Human, Mouse
Host:	Rabbit
Clonality:	Polyclonal
Specificity:	Expected reactivity: Cow, Dog, Guinea Pig, Horse, Human, Mouse, Pig, Rabbit, Rat Homology: Cow: 100%; Dog: 93%; Guinea Pig: 93%; Horse: 100%; Human: 100%; Mouse: 93%; Pig: 100%; Rabbit: 93%; Rat: 100%
Formulation:	Liquid. Purified antibody supplied in 1x PBS buffer with 0.09% (w/v) sodium azide and 2% sucrose. <i>Note that this product is shipped as lyophilized powder to China customers.</i>
Concentration:	lot specific
Purification:	Affinity Purified
Conjugation:	Unconjugated
Storage:	For short term use, store at 2-8°C up to 1 week. For long term storage, store at -20°C in small aliquots to prevent freeze-thaw cycles.
Stability:	Shelf life: one year from despatch.
Predicted Protein Size:	36kDa
Gene Name:	VPS26 retromer complex component A
Database Link:	NP_004887 Entrez Gene 30930 Mouse Entrez Gene 9559 Human O75436
Background:	This gene belongs to a group of vacuolar protein sorting (VPS) genes. The encoded protein is a component of a large multimeric complex, termed the retromer complex, involved in retrograde transport of proteins from endosomes to the trans-Golgi network. The close structural similarity between the yeast and human proteins that make up this complex suggests a similarity in function. Expression studies in yeast and mammalian cells indicate that this protein interacts directly with VPS35, which serves as the core of the retromer complex.



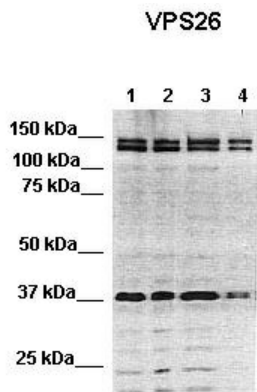
[View online »](#)

Synonyms: FLJ12930; HB58; Hbeta58; hVPS26; OTTHUMP00000019721; PEP8A; VPS26

Product images:



WB Suggested Anti-VPS26A Antibody
 Titration: 0.5 ug/ml
 Positive Control: Fetal kidney



Lanes:
 Lane 1: 40ug mouse brain extract
 Lane 2: 40ug mouse brain extract
 Lane 3: 40ug mouse brain extract
 Lane 4: 40ug mouse brain extract

Primary Antibody Dilution:
 1:1000

Secondary Antibody:
 Anti-rabbit-HRP Anti-rabbit-HRP
 Secondary Antibody Dilution:
 1:8000

Gene Name:
 VPS26A

Submitted by:
 Wen-Cheng Xiong, Georgia Health Sciences
 University

See Immunoblot 2 Data and Customer Feedback for more Information