

Product datasheet for **TA357920**

GIT2 Rabbit Polyclonal Antibody

Product data:

Product Type:	Primary Antibodies
Applications:	WB
Reactivity:	Human
Host:	Rabbit
Clonality:	Polyclonal
Specificity:	Expected reactivity: Cow, Dog, Guinea Pig, Horse, Human, Pig, Rabbit, Rat Homology: Cow: 100%; Dog: 100%; Guinea Pig: 86%; Horse: 100%; Human: 100%; Pig: 100%; Rabbit: 93%; Rat: 79%
Formulation:	Liquid. Purified antibody supplied in 1x PBS buffer with 0.09% (w/v) sodium azide and 2% sucrose. <i>Note that this product is shipped as lyophilized powder to China customers.</i>
Concentration:	lot specific
Purification:	Affinity Purified
Conjugation:	Unconjugated
Storage:	For short term use, store at 2-8°C up to 1 week. For long term storage, store at -20°C in small aliquots to prevent freeze-thaw cycles.
Stability:	Shelf life: one year from despatch.
Predicted Protein Size:	83kDa
Gene Name:	GIT ArfGAP 2
Database Link:	NP_476510 Entrez Gene 9815 Human Q14161



[View online »](#)

Background:

This gene encodes a member of the GIT protein family, which interact with G protein-coupled receptor kinases and possess ADP-ribosylation factor (ARF) GTPase-activating protein (GAP) activity. GIT proteins traffic between cytoplasmic complexes, focal adhesions, and the cell periphery, and interact with Pak interacting exchange factor beta (PIX) to form large oligomeric complexes that transiently recruit other proteins. GIT proteins regulate cytoskeletal dynamics and participate in receptor internalization and membrane trafficking. This gene has been shown to repress lamellipodial extension and focal adhesion turnover, and is thought to regulate cell motility. This gene undergoes extensive alternative splicing to generate multiple isoforms, but the full-length nature of some of these variants has not been determined.

Synonyms:

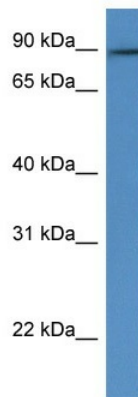
CAT-2; CAT2; DKFZp686G01261; KIAA0148; MGC760

Protein Families:

Druggable Genome

Protein Pathways:

Endocytosis

Product images:

WB Suggested Anti-GIT2 Antibody
Titration: 1.0 ug/ml
Positive Control: Fetal Brain