

## Product datasheet for **TA357914**

### Calumenin (CALU) Rabbit Polyclonal Antibody

#### Product data:

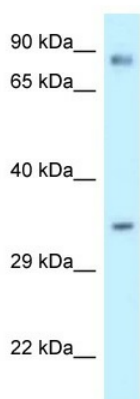
Product Type:	Primary Antibodies
Applications:	IHC, WB
Reactivity:	Human
Host:	Rabbit
Clonality:	Polyclonal
Specificity:	<b>Expected reactivity:</b> Cow, Dog, Guinea Pig, Horse, Human, Mouse, Rabbit, Rat, Zebrafish <b>Homology:</b> Cow: 100%; Dog: 93%; Guinea Pig: 100%; Horse: 100%; Human: 100%; Mouse: 100%; Rabbit: 100%; Rat: 100%; Zebrafish: 93%
Formulation:	Liquid. Purified antibody supplied in 1x PBS buffer with 0.09% (w/v) sodium azide and 2% sucrose. <i>Note that this product is shipped as lyophilized powder to China customers.</i>
Concentration:	lot specific
Purification:	Affinity Purified
Conjugation:	Unconjugated
Storage:	For short term use, store at 2-8°C up to 1 week. For long term storage, store at -20°C in small aliquots to prevent freeze-thaw cycles.
Stability:	Shelf life: one year from despatch.
Predicted Protein Size:	35kDa
Gene Name:	calumenin
Database Link:	<a href="#">NP_001210</a> <a href="#">Entrez Gene 813 Human</a> <a href="#">D6QS48</a>
Background:	The product of this gene is a calcium-binding protein localized in the endoplasmic reticulum (ER) and it is involved in such ER functions as protein folding and sorting. This protein belongs to a family of multiple EF-hand proteins (CERC) that include reticulocalbin, ERC-55, and Cab45 and the product of this gene. Alternatively spliced transcript variants encoding different isoforms have been identified.
Synonyms:	calumenin; Crocalbin; FLJ90608



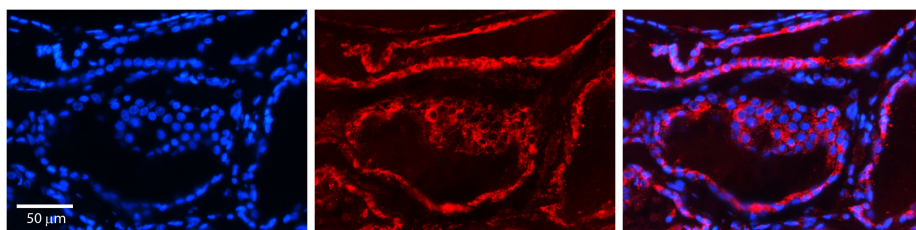
[View online »](#)

Protein Families: Secreted Protein

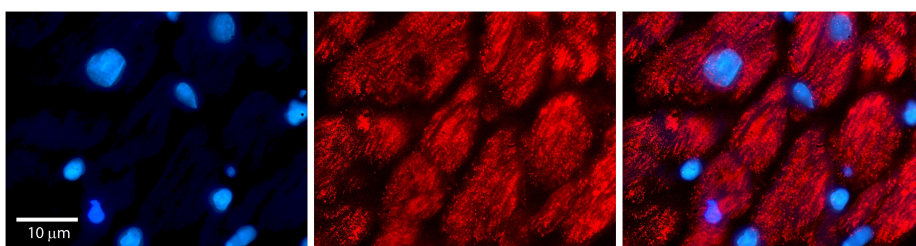
**Product images:**



WB Suggested Anti-CALU Antibody  
Titration: 1.0 ug/ml  
Positive Control: U937 Whole Cell



Rabbit Anti-CALU Antibody  
Catalog Number: TA357914  
Formalin Fixed Paraffin Embedded Tissue:  
Human Thyroid Tissue  
Observed Staining: Cytoplasm in follicular cells  
Primary Antibody Concentration: 1:100  
Other Working Concentrations: 1:600  
Secondary Antibody: Donkey anti-Rabbit-Cy3  
Secondary Antibody Concentration: 1:200  
Magnification: 20X  
Exposure Time: 0.5–2.0 sec



Rabbit Anti-CALU Antibody  
Catalog Number: TA357914  
Formalin Fixed Paraffin Embedded Tissue:  
Human heart Tissue  
Observed Staining: Cytoplasmic  
Primary Antibody Concentration: 1:100  
Other Working Concentrations: 1:600  
Secondary Antibody: Donkey anti-Rabbit-Cy3  
Secondary Antibody Concentration: 1:200  
Magnification: 20X  
Exposure Time: 0.5–2.0 sec