

Product datasheet for **TA357906**

Ephrin A4 (EFNA4) Rabbit Polyclonal Antibody

Product data:

Product Type:	Primary Antibodies
Applications:	WB
Reactivity:	Human
Host:	Rabbit
Clonality:	Polyclonal
Specificity:	Expected reactivity: Human, Pig Homology: Human: 100%; Pig: 79%
Formulation:	Liquid. Purified antibody supplied in 1x PBS buffer with 0.09% (w/v) sodium azide and 2% sucrose. <i>Note that this product is shipped as lyophilized powder to China customers.</i>
Concentration:	lot specific
Purification:	Affinity Purified
Conjugation:	Unconjugated
Storage:	For short term use, store at 2-8°C up to 1 week. For long term storage, store at -20°C in small aliquots to prevent freeze-thaw cycles.
Stability:	Shelf life: one year from despatch.
Predicted Protein Size:	24kDa
Gene Name:	ephrin A4
Database Link:	NP_872632 Entrez Gene 1945 Human P52798
Background:	This gene encodes a member of the ephrin (EPH) family. The ephrins and EPH-related receptors comprise the largest subfamily of receptor protein-tyrosine kinases and have been implicated in mediating developmental events, especially in the nervous system and in erythropoiesis. Based on their structures and sequence relationships, ephrins are divided into the ephrin-A (EFNA) class, which are anchored to the membrane by a glycosylphosphatidylinositol linkage, and the ephrin-B (EFNB) class, which are transmembrane proteins. This gene encodes an EFNA class ephrin. Three transcript variants that encode distinct proteins have been identified.



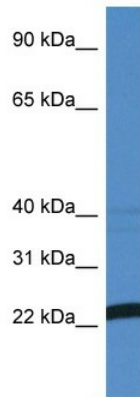
[View online »](#)

Synonyms: EFL4; ephrin-A4; EPLG4; LERK-4; LERK4; MGC125826

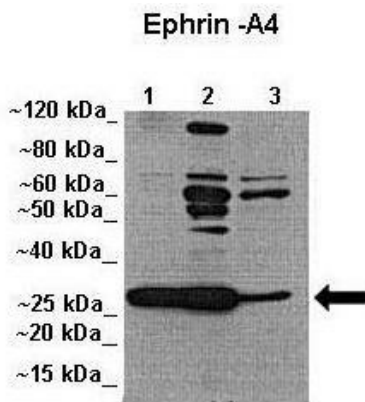
Protein Families: Secreted Protein

Protein Pathways: Axon guidance

Product images:



WB Suggested Anti-EFNA4 Antibody
 Titration: 1.0 ug/ml
 Positive Control: MCF7 Whole Cell
 EFNA4 is supported by BioGPS gene expression data to be expressed in MCF7



See Immunoblot 2 Data and Customer Feedback for more Information

Lanes:
 Lane 1: 20ug A549 cell lysate
 Lane 2: 20ug H1437 cell lysate
 Lane 3: 20ug PC3 cell lysate
 Primary Antibody Dilution: 1:500
 Secondary Antibody: Anti-rabbit-HRP
 Secondary Antibody Dilution: 1:1000
 Gene Name: EFNA4
 Submitted by: Erika Mathes Lisabeth, Sanford-Burnham Medical Research Institute