

Product datasheet for **TA357890**

Melatonin Receptor 1A (MTNR1A) Rabbit Polyclonal Antibody

Product data:

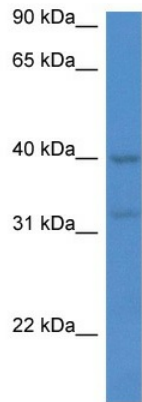
Product Type:	Primary Antibodies
Applications:	WB
Reactivity:	Human
Host:	Rabbit
Clonality:	Polyclonal
Specificity:	Expected reactivity: Cow, Dog, Goat, Guinea Pig, Horse, Human, Rabbit, Sheep Homology: Cow: 79%; Dog: 91%; Goat: 79%; Guinea Pig: 82%; Horse: 83%; Human: 100%; Rabbit: 83%; Sheep: 79%
Formulation:	Liquid. Purified antibody supplied in 1x PBS buffer with 0.09% (w/v) sodium azide and 2% sucrose. <i>Note that this product is shipped as lyophilized powder to China customers.</i>
Concentration:	lot specific
Purification:	Affinity Purified
Conjugation:	Unconjugated
Storage:	For short term use, store at 2-8°C up to 1 week. For long term storage, store at -20°C in small aliquots to prevent freeze-thaw cycles.
Stability:	Shelf life: one year from despatch.
Predicted Protein Size:	39kDa
Gene Name:	melatonin receptor 1A
Database Link:	NP_005949 Entrez Gene 4543 Human P48039
Background:	This gene encodes one of two high affinity forms of a receptor for melatonin, the primary hormone secreted by the pineal gland. This receptor is a G-protein coupled, 7-transmembrane receptor that is responsible for melatonin effects on mammalian circadian rhythm and reproductive alterations affected by day length. The receptor is an integral membrane protein that is readily detectable and localized to two specific regions of the brain. The hypothalamic suprachiasmatic nucleus appears to be involved in circadian rhythm while the hypophysial pars tuberalis may be responsible for the reproductive effects of melatonin.



[View online »](#)

Synonyms: MEL-1A-R; MT1
Protein Families: Druggable Genome, GPCR, Transmembrane
Protein Pathways: Neuroactive ligand-receptor interaction

Product images:



WB Suggested Anti-MTNR1A Antibody
 Titration: 1.0 ug/ml
 Positive Control: Jurkat Whole Cell

MTNR1A



Rabbit Anti-MTNR1A
 Sample Type: Human 293T
 Antibody Concentration: 1ug/mL

Host: Rabbit
 Target Name: HIRIP3
 Sample Type: 293T
 Antibody Dilution: 1.0ug/ml