

Product datasheet for **TA357884**

ROCK2 Rabbit Polyclonal Antibody

Product data:

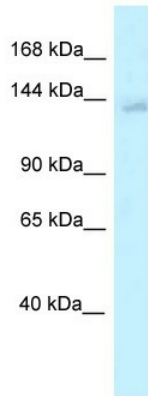
Product Type:	Primary Antibodies
Applications:	IHC, WB
Reactivity:	Human, Mouse
Host:	Rabbit
Clonality:	Polyclonal
Specificity:	Expected reactivity: Cow, Dog, Guinea Pig, Horse, Human, Mouse, Pig, Rabbit, Rat, Zebrafish Homology: Cow: 100%; Dog: 100%; Guinea Pig: 93%; Horse: 100%; Human: 100%; Mouse: 100%; Pig: 100%; Rabbit: 79%; Rat: 100%; Zebrafish: 79%
Formulation:	Liquid. Purified antibody supplied in 1x PBS buffer with 0.09% (w/v) sodium azide and 2% sucrose. <i>Note that this product is shipped as lyophilized powder to China customers.</i>
Concentration:	lot specific
Purification:	Affinity Purified
Conjugation:	Unconjugated
Storage:	For short term use, store at 2-8°C up to 1 week. For long term storage, store at -20°C in small aliquots to prevent freeze-thaw cycles.
Stability:	Shelf life: one year from despatch.
Predicted Protein Size:	153kDa
Gene Name:	Rho associated coiled-coil containing protein kinase 2
Database Link:	NP_004841 Entrez Gene 19878 Mouse Entrez Gene 9475 Human O75116
Background:	The protein encoded by this gene is a serine/threonine kinase that regulates cytokinesis, smooth muscle contraction, the formation of actin stress fibers and focal adhesions, and the activation of the c-fos serum response element. This protein, which is an isozyme of ROCK1 is a target for the small GTPase Rho.
Synonyms:	KIAA0619
Protein Families:	Druggable Genome, Protein Kinase



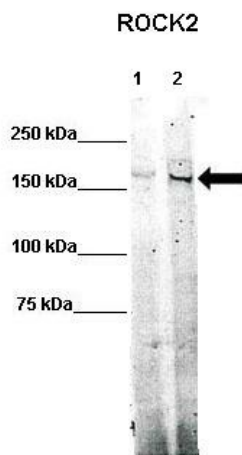
[View online »](#)

Protein Pathways:

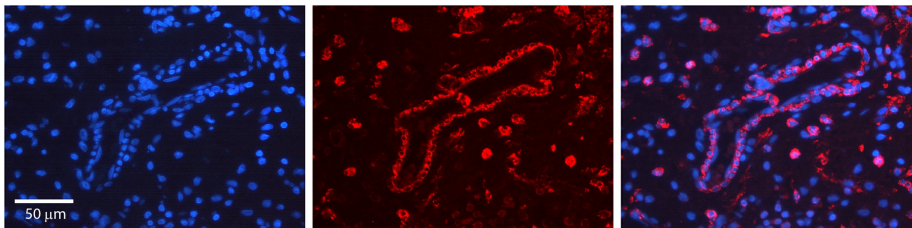
Axon guidance, Chemokine signaling pathway, Focal adhesion, Leukocyte transendothelial migration, Pathogenic Escherichia coli infection, Regulation of actin cytoskeleton, TGF-beta signaling pathway, Vascular smooth muscle contraction, Wnt signaling pathway

Product images:


ROCK2 antibody - middle region (TA357884) validated by WB using OVCAR-3 cell lysate at 1.0ug/ml.



WB Suggested Anti-ROCK2 Antibody
 Positive Control: Lane 1: 80ug mouse brain extract
 Lane 2: 80ug rat brain extract
 Primary Antibody Dilution : 1:500
 Secondary Antibody : IRDye 800 CW goat anti-rabbit from Li-COR Bioscience
 Secondary Antibody Dilution : 1:20,000
 Submitted by: Dr. Yuzhi Chen, University of Arkansas for Medical Science



Rabbit Anti-ROCK2 Antibody
 Catalog Number: TA357884
 Formalin Fixed Paraffin Embedded Tissue:
 Human Urinary Bladder Tissue
 Observed Staining: Plasma membrane, Nucleus
 Primary Antibody Concentration: 1:600
 Other Working Concentrations: N/A
 Secondary Antibody: Donkey anti-Rabbit-Cy3
 Secondary Antibody Concentration: 1:200
 Magnification: 20X
 Exposure Time: 0.5-2.0 sec