

## Product datasheet for **TA357880**

### Rab2 (RAB2A) Rabbit Polyclonal Antibody

#### Product data:

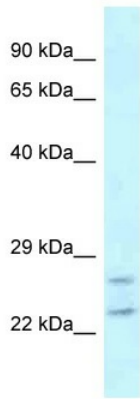
Product Type:	Primary Antibodies
Applications:	WB
Reactivity:	Human
Host:	Rabbit
Clonality:	Polyclonal
Specificity:	<b>Expected reactivity:</b> Cow, Dog, Goat, Guinea Pig, Horse, Human, Mouse, Rabbit, Rat, Zebrafish <b>Homology:</b> Cow: 100%; Dog: 100%; Goat: 100%; Guinea Pig: 100%; Horse: 100%; Human: 100%; Mouse: 100%; Rabbit: 100%; Rat: 100%; Zebrafish: 100%
Formulation:	Liquid. Purified antibody supplied in 1x PBS buffer with 0.09% (w/v) sodium azide and 2% sucrose. <i>Note that this product is shipped as lyophilized powder to China customers.</i>
Concentration:	lot specific
Purification:	Affinity Purified
Conjugation:	Unconjugated
Storage:	For short term use, store at 2-8°C up to 1 week. For long term storage, store at -20°C in small aliquots to prevent freeze-thaw cycles.
Stability:	Shelf life: one year from despatch.
Predicted Protein Size:	23kDa
Gene Name:	RAB2A, member RAS oncogene family
Database Link:	<a href="#">NP_002856</a> <a href="#">Entrez Gene 5862 Human</a> <a href="#">P61019</a>
Background:	Members of the Rab protein family are nontransforming monomeric GTP-binding proteins of the Ras superfamily that contain 4 highly conserved regions involved in GTP binding and hydrolysis. Rabs are prenylated, membrane-bound proteins involved in vesicular fusion and trafficking. The mammalian RAB proteins show striking similarities to the <i>S. cerevisiae</i> YPT1 and SEC4 proteins, Ras-related GTP-binding proteins involved in the regulation of secretion.



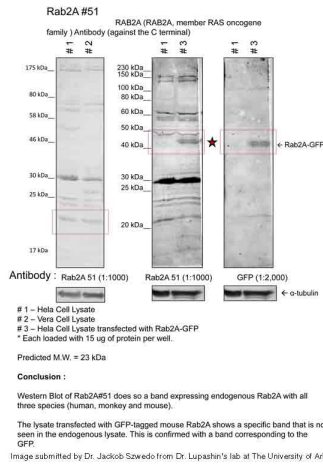
[View online »](#)

Synonyms: RAB2  
 Protein Families: Druggable Genome

**Product images:**



RAB2A antibody - C-terminal region (TA357880) validated by WB using MDA-MB435S Cell Lysate at 1ug/ml. RAB2A is strongly supported by BioGPS gene expression data to be expressed in Human MDA-MB435 cells



Sample Type: 1. Human Cervical Cancer Cell Lysate (15ug) 2. Monkey Fibroblast Cell Lysate (15ug) 3. Human Cervical Cancer Cell transfected with mouse Rab2A-GFP (15ug) Primary Dilution: 1:1000 Secondary Antibody: goat anti-Rabbit Secondary Dilution: 1:40,000 Image Submitted by: Dr. Jakob Szewedo, Dr. Lupashin's Lab University of Arkansas for Medical Sciences