

## Product datasheet for **TA357879**

### PAF1 Rabbit Polyclonal Antibody

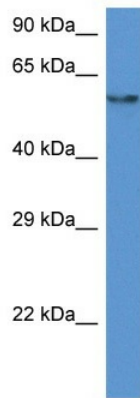
#### Product data:

Product Type:	Primary Antibodies
Applications:	IHC, WB
Reactivity:	Human
Host:	Rabbit
Clonality:	Polyclonal
Specificity:	<b>Expected reactivity:</b> Cow, Dog, Guinea Pig, Horse, Human, Mouse, Rabbit, Rat, Zebrafish <b>Homology:</b> Cow: 100%; Dog: 100%; Guinea Pig: 100%; Horse: 100%; Human: 100%; Mouse: 100%; Rabbit: 100%; Rat: 100%; Zebrafish: 93%
Formulation:	Liquid. Purified antibody supplied in 1x PBS buffer with 0.09% (w/v) sodium azide and 2% sucrose. <i>Note that this product is shipped as lyophilized powder to China customers.</i>
Concentration:	lot specific
Purification:	Affinity Purified
Conjugation:	Unconjugated
Storage:	For short term use, store at 2-8°C up to 1 week. For long term storage, store at -20°C in small aliquots to prevent freeze-thaw cycles.
Stability:	Shelf life: one year from despatch.
Predicted Protein Size:	58kDa
Gene Name:	PAF1 homolog, Paf1/RNA polymerase II complex component
Database Link:	<a href="#">NP_061961</a> <a href="#">Entrez Gene 54623 Human</a> <a href="#">Q8N7H5</a>
Background:	PAF1, parafibromin, LEO1, and CTR9 form the PAF protein complex that associates with the RNA polymerase II subunit POLR2A and with a histone methyltransferase complex. The PAF complex also has a role in histone monoubiquitination.
Synonyms:	F23149_1; FLJ11123; hPAF1; PD2

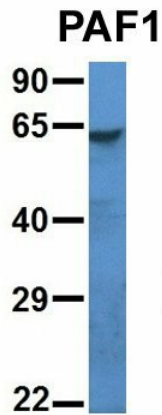


[View online »](#)

Product images:

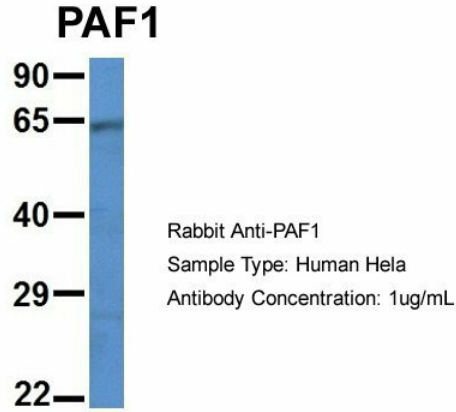


WB Suggested Anti-PAF1 Antibody  
 Titration: 1.0 ug/ml  
 Positive Control: HepG2 Whole Cell

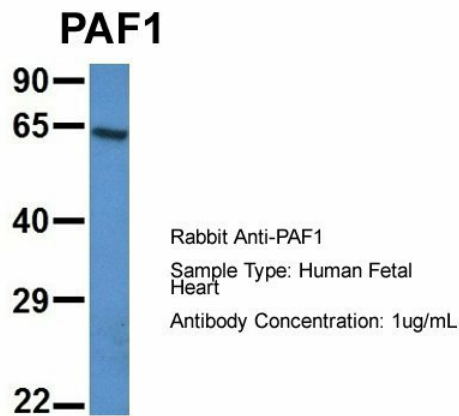


Rabbit Anti-PAF1  
 Sample Type: Human 721\_B  
 Antibody Concentration: 1ug/mL

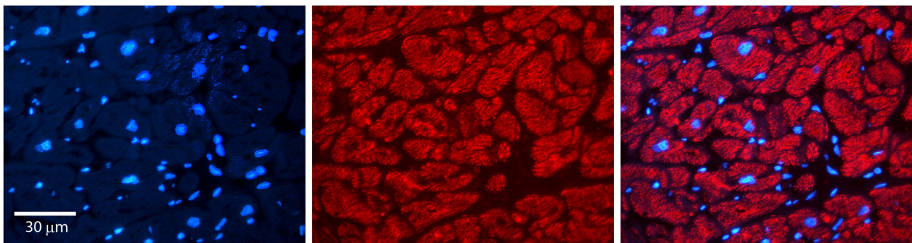
Host: Rabbit  
 Target Name: PAF1  
 Sample Type: Human 721\_B  
 Antibody Dilution: 1.0ug/ml  
 PAF1 is supported by BioGPS gene expression data to be expressed in 721\_B



Host: Rabbit  
Target Name: PAF1  
Sample Type: Human HeLa  
Antibody Dilution: 1.0ug/ml  
PAF1 is supported by BioGPS gene expression data to be expressed in HeLa



Host: Rabbit  
Target Name: PAF1  
Sample Type: Human Fetal Heart  
Antibody Dilution: 1.0ug/ml



Rabbit Anti-PAF1 Antibody  
Catalog Number: TA357879  
Formalin Fixed Paraffin Embedded Tissue:  
Human heart Tissue  
Observed Staining: Cytoplasmic  
Primary Antibody Concentration: 1:100  
Other Working Concentrations: 1:600  
Secondary Antibody: Donkey anti-Rabbit-Cy3  
Secondary Antibody Concentration: 1:200  
Magnification: 20X  
Exposure Time: 0.5-2.0 sec