

## Product datasheet for **TA357871**

### PPT1 Rabbit Polyclonal Antibody

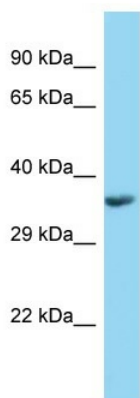
#### Product data:

Product Type:	Primary Antibodies
Applications:	WB
Reactivity:	Human
Host:	Rabbit
Clonality:	Polyclonal
Specificity:	<b>Expected reactivity:</b> Cow, Dog, Guinea Pig, Horse, Human, Mouse, Rabbit, Rat <b>Homology:</b> Cow: 86%; Dog: 100%; Guinea Pig: 85%; Horse: 93%; Human: 100%; Mouse: 77%; Rabbit: 92%; Rat: 83%
Formulation:	Liquid. Purified antibody supplied in 1x PBS buffer with 0.09% (w/v) sodium azide and 2% sucrose. <i>Note that this product is shipped as lyophilized powder to China customers.</i>
Concentration:	lot specific
Purification:	Affinity Purified
Conjugation:	Unconjugated
Storage:	For short term use, store at 2-8°C up to 1 week. For long term storage, store at -20°C in small aliquots to prevent freeze-thaw cycles.
Stability:	Shelf life: one year from despatch.
Predicted Protein Size:	34kDa
Gene Name:	palmitoyl-protein thioesterase 1
Database Link:	<a href="#">NP_000301</a> <a href="#">Entrez Gene 5538 Human</a> <a href="#">P50897</a>
Background:	The protein encoded by this gene is a small glycoprotein involved in the catabolism of lipid-modified proteins during lysosomal degradation. The encoded enzyme removes thioester-linked fatty acyl groups such as palmitate from cysteine residues. Defects in this gene are a cause of infantile neuronal ceroid lipofuscinosis 1 (CLN1, or INCL) and neuronal ceroid lipofuscinosis 4 (CLN4). Two transcript variants encoding different isoforms have been found for this gene.



[View online »](#)

**Synonyms:** CLN1; INCL; PPT; PPT-1  
**Protein Families:** Druggable Genome  
**Protein Pathways:** Fatty acid elongation in mitochondria, Lysosome, Metabolic pathways

**Product images:**

WB Suggested Anti-PPT1 Antibody  
Titration: 1.0 ug/ml  
Positive Control: Fetal kidney