

Product datasheet for **TA357864**

STOM Rabbit Polyclonal Antibody

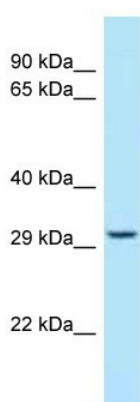
Product data:

Product Type:	Primary Antibodies
Applications:	IF, WB
Reactivity:	Human
Host:	Rabbit
Clonality:	Polyclonal
Specificity:	Expected reactivity: Cow, Dog, Guinea Pig, Horse, Human, Mouse, Rabbit, Rat, Zebrafish Homology: Cow: 100%; Dog: 100%; Guinea Pig: 100%; Horse: 100%; Human: 100%; Mouse: 100%; Rabbit: 100%; Rat: 100%; Zebrafish: 100%
Formulation:	Liquid. Purified antibody supplied in 1x PBS buffer with 0.09% (w/v) sodium azide and 2% sucrose. <i>Note that this product is shipped as lyophilized powder to China customers.</i>
Concentration:	lot specific
Purification:	Affinity Purified
Conjugation:	Unconjugated
Storage:	For short term use, store at 2-8°C up to 1 week. For long term storage, store at -20°C in small aliquots to prevent freeze-thaw cycles.
Stability:	Shelf life: one year from despatch.
Predicted Protein Size:	32kDa
Gene Name:	stomatin
Database Link:	NP_004090 Entrez Gene 2040 Human P27105
Background:	STOM is thought to regulate cation conductance. It may regulate ACCN1 and ACCN3 gating
Synonyms:	BND7; EPB7; EPB72; Stomatin
Protein Families:	Transmembrane



[View online »](#)

Product images:

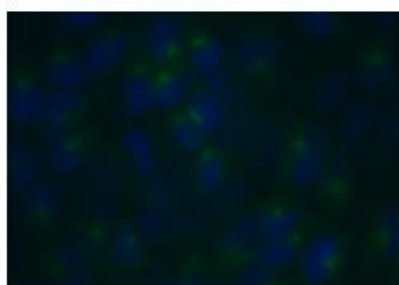


WB Suggested Anti-STOM Antibody

Titration: 1.0 ug/ml

Positive Control: HeLa Whole Cell
STOM is strongly supported by BioGPS gene expression data to be expressed in Human HeLa cells

STOM



Green: STOM
Blue: DAPI

Sample Type:

HeLa cells

Primary Antibody Dilution:

1:150

Secondary Antibody:

Goat anti-rabbit-Alexa Fluor 488

Secondary Antibody Dilution:

1:800

Color/Signal Descriptions:

Green: STOM Blue: DAPI

Gene Name:

STOM

Submitted by:

COCOLA Cinzia, Stem Cell Biology and Cancer
Research Unit