

## Product datasheet for **TA357856**

### Integrin beta 4 binding protein (EIF6) Rabbit Polyclonal Antibody

#### Product data:

Product Type:	Primary Antibodies
Applications:	WB
Reactivity:	Human, Frog
Host:	Rabbit
Clonality:	Polyclonal
Specificity:	<b>Expected reactivity:</b> Cow, Dog, Guinea Pig, Horse, Human, Mouse, Rabbit, Rat, Sheep, Yeast, Zebrafish <b>Homology:</b> Cow: 86%; Dog: 93%; Guinea Pig: 93%; Horse: 93%; Human: 100%; Mouse: 100%; Rabbit: 100%; Rat: 100%; Sheep: 86%; Yeast: 85%; Zebrafish: 93%
Formulation:	Liquid. Purified antibody supplied in 1x PBS buffer with 0.09% (w/v) sodium azide and 2% sucrose. <i>Note that this product is shipped as lyophilized powder to China customers.</i>
Concentration:	lot specific
Purification:	Affinity Purified
Conjugation:	Unconjugated
Storage:	For short term use, store at 2-8°C up to 1 week. For long term storage, store at -20°C in small aliquots to prevent freeze-thaw cycles.
Stability:	Shelf life: one year from despatch.
Predicted Protein Size:	27kDa
Gene Name:	eukaryotic translation initiation factor 6
Database Link:	<a href="#">NP_002203</a> <a href="#">Entrez Gene 3692 Human</a> <a href="#">P56537</a>



[View online »](#)

**Background:**

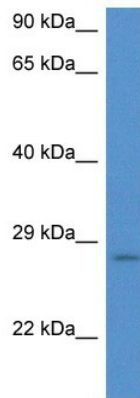
Hemidesmosomes are structures which link the basal lamina to the intermediate filament cytoskeleton. An important functional component of hemidesmosomes is the integrin beta-4 subunit (ITGB4), a protein containing two fibronectin type III domains. The protein encoded by this gene binds to the fibronectin type III domains of ITGB4 and may help link ITGB4 to the intermediate filament cytoskeleton. The encoded protein, which is insoluble and found both in the nucleus and in the cytoplasm, can function as a translation initiation factor and prevent the association of the 40S and 60S ribosomal subunits.

**Synonyms:**

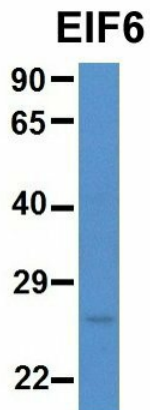
b(2)gcn; CAB; eIF-6; EIF3A; gcn; ITGB4BP; p27(BBP); p27BBP

**Protein Families:**

Druggable Genome

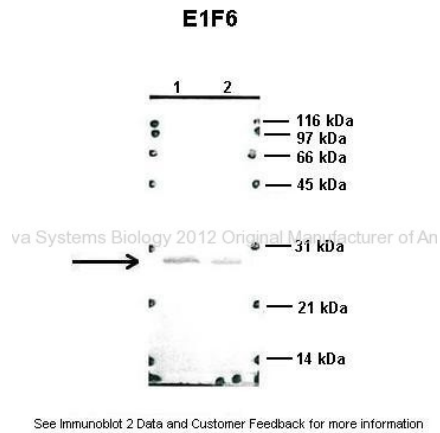
**Product images:**


WB Suggested Anti-EIF6 Antibody  
 Titration: 1.0 ug/ml  
 Positive Control: Hela Whole Cell EIF6 is supported by BioGPS gene expression data to be expressed in HeLa



Rabbit Anti-EIF6  
 Sample Type: Human 721\_B  
 Antibody Concentration: 1ug/mL

Host: Rabbit  
 Target Name: EIF6  
 Sample Type: Human 721\_B  
 Antibody Dilution: 1.0ug/ml EIF6 is supported by BioGPS gene expression data to be expressed in 721\_B



Researcher: Rosa Carotenuto, Department of Structural and Functional Biology, University of Naples 'Federico II'

Application: Western blotting

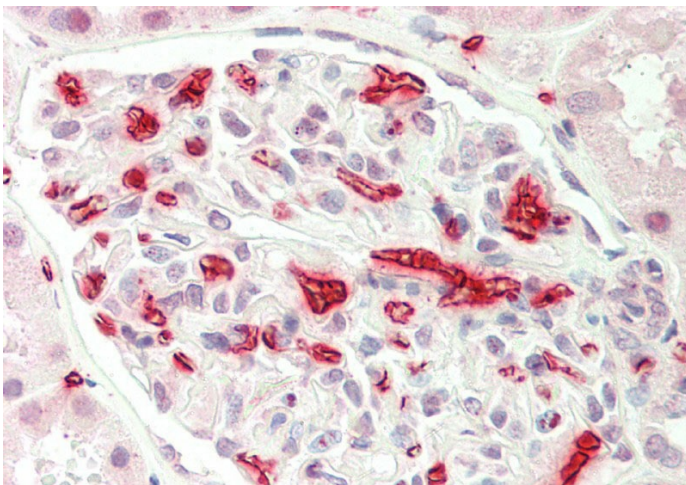
Species + Tissue/Cell type: Xenopus laevis embryos

How many µg's of tissue/cell lysate run on the gel: 1. 50 µg xenopus laevis embryos lysate (lysate buffer) 2. 50 µg xenopus laevis embryos lysate (HB buffer)

Primary antibody dilution: 1:500

Secondary antibody: Goat Anti-Rabbit AP

Secondary antibody dilution: 1:20,000



Rabbit Anti-EIF6 antibody

Catalog Number: ARP61388

Formalin Fixed Paraffin Embedded Tissue: Human Kidney

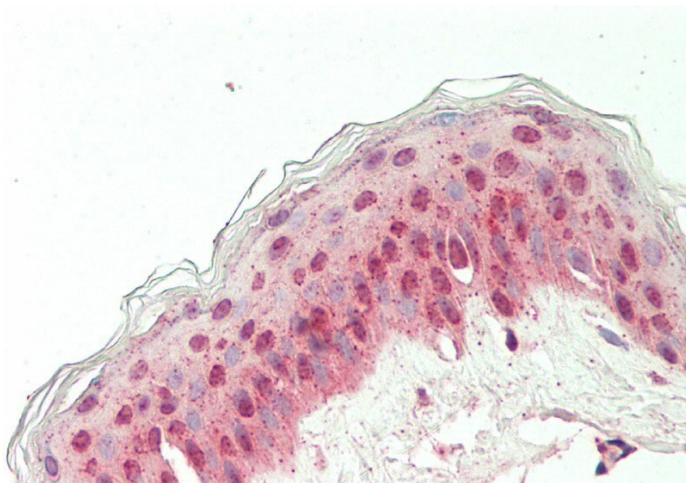
Primary antibody Concentration: 1:100

Secondary Antibody: Donkey anti-Rabbit-Cy3

Secondary Antibody Concentration: 1:200

Magnification: 20x

Exposure Time: 0.5-2.0sec



Rabbit Anti-EIF6 antibody

Catalog Number: ARP61388

Formalin Fixed Paraffin Embedded Tissue: Human Skin

Primary antibody Concentration: 1:100

Secondary Antibody: Donkey anti-Rabbit-Cy3

Secondary Antibody Concentration: 1:200

Magnification: 20x

Exposure Time: 0.5-2.0sec