

Product datasheet for **TA357851**

Calprotectin (S100A8) Rabbit Polyclonal Antibody

Product data:

Product Type:	Primary Antibodies
Applications:	IHC, WB
Reactivity:	Human
Host:	Rabbit
Clonality:	Polyclonal
Specificity:	Expected reactivity: Human Homology: Human: 100%
Formulation:	Liquid. Purified antibody supplied in 1x PBS buffer with 0.09% (w/v) sodium azide and 2% sucrose. <i>Note that this product is shipped as lyophilized powder to China customers.</i>
Concentration:	lot specific
Purification:	Affinity Purified
Conjugation:	Unconjugated
Storage:	For short term use, store at 2-8°C up to 1 week. For long term storage, store at -20°C in small aliquots to prevent freeze-thaw cycles.
Stability:	Shelf life: one year from despatch.
Predicted Protein Size:	10kDa
Gene Name:	S100 calcium binding protein A8
Database Link:	NP_002955 Entrez Gene 6279 Human P05109
Background:	The protein encoded by this gene is a member of the S100 family of proteins containing 2 EF-hand calcium-binding motifs. S100 proteins are localized in the cytoplasm and/or nucleus of a wide range of cells, and involved in the regulation of a number of cellular processes such as cell cycle progression and differentiation. S100 genes include at least 13 members which are located as a cluster on chromosome 1q21. This protein may function in the inhibition of casein kinase and as a cytokine. Altered expression of this protein is associated with the disease cystic fibrosis.



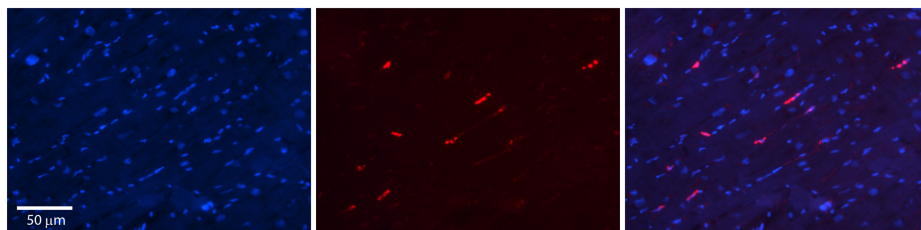
[View online »](#)

Synonyms: 60B8AG; CAGA; Calgranulin-A; CFAG; CGLA; CP-10; L1Ag; MA387; MIF; MRP-8; MRP8; NIF; OTTHUMP00000015330; P8

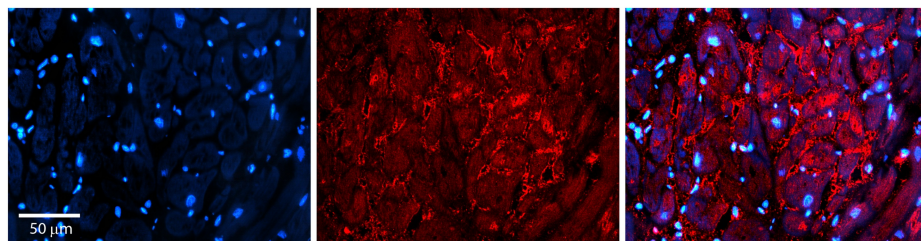
Product images:



WB Suggested Anti-S100A8 Antibody
Titration: 1.0 ug/ml
Positive Control: ACHN Whole Cell



Rabbit Anti-S100A8 Antibody
Catalog Number: TA357851
Formalin Fixed Paraffin Embedded Tissue:
Human Heart Tissue
Observed Staining: Cytoplasm in endothelial cells
in capillaries
Primary Antibody Concentration: N/A
Other Working Concentrations: 1:600
Secondary Antibody: Donkey anti-Rabbit-Cy3
Secondary Antibody Concentration: 1:200
Magnification: 20X
Exposure Time: 0.5–2.0 sec



Rabbit Anti-S100A8 Antibody
Catalog Number: TA357851
Formalin Fixed Paraffin Embedded Tissue:
Human heart Tissue
Observed Staining: Secreted
Primary Antibody Concentration: 1:100
Other Working Concentrations: 1:600
Secondary Antibody: Donkey anti-Rabbit-Cy3
Secondary Antibody Concentration: 1:200
Magnification: 20X
Exposure Time: 0.5–2.0 sec