

Product datasheet for **TA357850**

Xg blood group (XG) Rabbit Polyclonal Antibody

Product data:

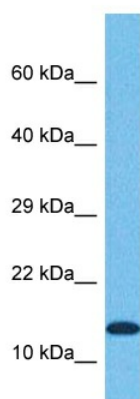
Product Type:	Primary Antibodies
Applications:	WB
Reactivity:	Human
Host:	Rabbit
Clonality:	Polyclonal
Immunogen:	The immunogen is a synthetic peptide directed towards the middle terminal region of human XG
Specificity:	Expected reactivity: Human Homology: Human: 100%
Formulation:	Liquid. Purified antibody supplied in 1x PBS buffer with 0.09% (w/v) sodium azide and 2% sucrose.
Concentration:	lot specific
Purification:	Affinity purified
Conjugation:	Unconjugated
Storage:	For short term use, store at 2-8°C up to 1 week. For long term storage, store at -20°C in small aliquots to prevent freeze-thaw cycles.
Stability:	Shelf life: one year from despatch.
Predicted Protein Size:	19 kDa
Gene Name:	Xg blood group
Database Link:	NP_780778 Entrez Gene 7499 Human P55808
Background:	This gene encodes the XG blood group antigen, and is located at the pseudoautosomal boundary on the short (p) arm of chromosome X. The three 5' exons reside in the pseudoautosomal region and the remaining exons within the X-specific end. A truncated copy of this gene is found on the Y chromosome at the pseudoautosomal boundary. It is transcribed, but not expected to make a Y-chromosome specific gene product. Alternatively spliced transcript variants encoding different isoforms have been found for this gene.



[View online »](#)

Synonyms: MGC118758; MGC118759; MGC118760; MGC118761; PBDX

Product images:



Host: Rabbit
Target Name: XG
Sample Type: Thymus Tumor Lysate
Antibody Dilution: 1.0 μ g/ml

Host: Rabbit
Target Name: XG
Sample Tissue: Human Thymus Tumor lysates
Antibody Dilution: 1 μ g/ml