

## Product datasheet for **TA357849**

### CysLT1 (CYSLTR1) Rabbit Polyclonal Antibody

#### Product data:

Product Type:	Primary Antibodies
Applications:	WB
Reactivity:	Human
Host:	Rabbit
Clonality:	Polyclonal
Specificity:	<b>Expected reactivity:</b> Cow, Dog, Guinea Pig, Horse, Human, Rabbit <b>Homology:</b> Cow: 93%; Dog: 86%; Guinea Pig: 85%; Horse: 86%; Human: 100%; Rabbit: 79%
Formulation:	Liquid. Purified antibody supplied in 1x PBS buffer with 0.09% (w/v) sodium azide and 2% sucrose. <i>Note that this product is shipped as lyophilized powder to China customers.</i>
Concentration:	lot specific
Purification:	Affinity Purified
Conjugation:	Unconjugated
Storage:	For short term use, store at 2-8°C up to 1 week. For long term storage, store at -20°C in small aliquots to prevent freeze-thaw cycles.
Stability:	Shelf life: one year from despatch.
Predicted Protein Size:	37kDa
Gene Name:	cysteinyl leukotriene receptor 1
Database Link:	<a href="#">NP_006630</a> <a href="#">Entrez Gene 10800 Human</a> <a href="#">Q9Y271</a>
Background:	The cysteinyl leukotrienes LTC <sub>4</sub> , LTD <sub>4</sub> , and LTE <sub>4</sub> are important mediators of human bronchial asthma. Pharmacologic studies have determined that cysteinyl leukotrienes activate at least 2 receptors, the protein encoded by this gene and CYSLTR2. This encoded receptor is a member of the superfamily of G protein-coupled receptors. Activation of this receptor by LTD <sub>4</sub> results in contraction and proliferation of smooth muscle, oedema, eosinophil migration and damage to the mucus layer in the lung.
Synonyms:	CysLT(1); CYSLT1; CYSLT1R; CYSLTR; HG55; HMTMF81; MGC46139

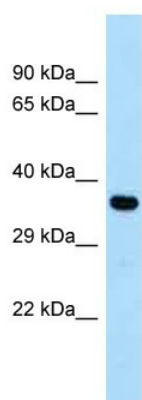


[View online »](#)

Protein Families: Druggable Genome, GPCR, Transmembrane

Protein Pathways: Calcium signaling pathway, Neuroactive ligand-receptor interaction

**Product images:**



WB Suggested Anti-CYSLTR1 Antibody  
Titration: 1.0 ug/ml  
Positive Control: Fetal Heart