

Product datasheet for **TA357848**

Junctional Adhesion Molecule 1 (F11R) Rabbit Polyclonal Antibody

Product data:

Product Type:	Primary Antibodies
Applications:	WB
Reactivity:	Human
Host:	Rabbit
Clonality:	Polyclonal
Specificity:	Expected reactivity: Cow, Dog, Human, Pig, Rabbit Homology: Cow: 85%; Dog: 92%; Human: 100%; Pig: 92%; Rabbit: 100%
Formulation:	Liquid. Purified antibody supplied in 1x PBS buffer with 0.09% (w/v) sodium azide and 2% sucrose. <i>Note that this product is shipped as lyophilized powder to China customers.</i>
Concentration:	lot specific
Purification:	Affinity Purified
Conjugation:	Unconjugated
Storage:	For short term use, store at 2-8°C up to 1 week. For long term storage, store at -20°C in small aliquots to prevent freeze-thaw cycles.
Stability:	Shelf life: one year from despatch.
Predicted Protein Size:	33kDa
Gene Name:	F11 receptor
Database Link:	NP_058642 Entrez Gene 50848 Human Q9Y624
Background:	Tight junctions represent one mode of cell-to-cell adhesion in epithelial or endothelial cell sheets, forming continuous seals around cells and serving as a physical barrier to prevent solutes and water from passing freely through the paracellular space. The protein encoded by this immunoglobulin superfamily gene member is an important regulator of tight junction assembly in epithelia. In addition, the encoded protein can act as (1) a receptor for reovirus, (2) a ligand for the integrin LFA1, involved in leukocyte transmigration, and (3) a platelet receptor. Multiple 5' alternatively spliced variants, encoding the same protein, have been identified but their biological validity has not been established.



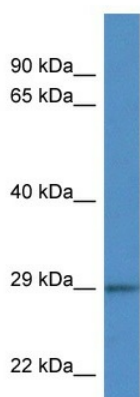
[View online »](#)

Synonyms: CD321; JAM; JAM-1; JAM-A; JAM1; JAMA; JCAM; KAT; OTTHUMP00000027880; OTTHUMP00000027881; PAM-1

Protein Families: Druggable Genome, Transmembrane

Protein Pathways: Cell adhesion molecules (CAMs), Epithelial cell signaling in Helicobacter pylori infection, Leukocyte transendothelial migration, Tight junction

Product images:



WB Suggested Anti-F11R Antibody
Titration: 1.0 ug/ml
Positive Control: Hela Whole Cell F11R is supported by BioGPS gene expression data to be expressed in HeLa