

Product datasheet for **TA357840**

eIF2B epsilon (EIF2B5) Rabbit Polyclonal Antibody

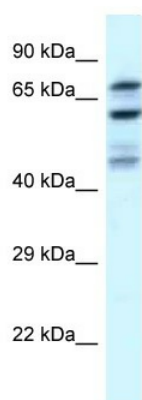
Product data:

Product Type:	Primary Antibodies
Applications:	WB
Reactivity:	Human
Host:	Rabbit
Clonality:	Polyclonal
Specificity:	Expected reactivity: Cow, Dog, Horse, Human, Rat Homology: Cow: 85%; Dog: 92%; Horse: 85%; Human: 100%; Rat: 85%
Formulation:	Liquid. Purified antibody supplied in 1x PBS buffer with 0.09% (w/v) sodium azide and 2% sucrose. <i>Note that this product is shipped as lyophilized powder to China customers.</i>
Concentration:	lot specific
Purification:	Affinity Purified
Conjugation:	Unconjugated
Storage:	For short term use, store at 2-8°C up to 1 week. For long term storage, store at -20°C in small aliquots to prevent freeze-thaw cycles.
Stability:	Shelf life: one year from despatch.
Predicted Protein Size:	79kDa
Gene Name:	eukaryotic translation initiation factor 2B subunit epsilon
Database Link:	NP_003898 Entrez Gene 8893 Human Q13144
Background:	This gene encodes one of five subunits of eukaryotic translation initiation factor 2B (EIF2B), a GTP exchange factor for eukaryotic initiation factor 2 and an essential regulator for protein synthesis. Mutations in this gene and the genes encoding other EIF2B subunits have been associated with leukoencephalopathy with vanishing white matter.
Synonyms:	CACH; CLE; EIF-2B; EIF2BE; EIF2Bepsilon; LVWM



[View online »](#)

Product images:



WB Suggested Anti-EIF2B5 Antibody
Titration: 1.0 ug/ml
Positive Control: U937 Whole Cell