

Product datasheet for **TA357829**

NKG2A (KLRC1) Rabbit Polyclonal Antibody

Product data:

Product Type:	Primary Antibodies
Applications:	WB
Reactivity:	Human
Host:	Rabbit
Clonality:	Polyclonal
Specificity:	Expected reactivity: Guinea Pig, Human, Mouse Homology: Guinea Pig: 79%; Human: 100%; Mouse: 86%
Formulation:	Liquid. Purified antibody supplied in 1x PBS buffer with 0.09% (w/v) sodium azide and 2% sucrose. <i>Note that this product is shipped as lyophilized powder to China customers.</i>
Concentration:	lot specific
Purification:	Affinity Purified
Conjugation:	Unconjugated
Storage:	For short term use, store at 2-8°C up to 1 week. For long term storage, store at -20°C in small aliquots to prevent freeze-thaw cycles.
Stability:	Shelf life: one year from despatch.
Predicted Protein Size:	26kDa
Gene Name:	killer cell lectin like receptor C1
Database Link:	NP_002250 Entrez Gene 3821 Human P26715



[View online »](#)

Background:

Natural killer (NK) cells are lymphocytes that can mediate lysis of certain tumor cells and virus-infected cells without previous activation. They can also regulate specific humoral and cell-mediated immunity. The protein encoded by this gene belongs to the killer cell lectin-like receptor family, also called NKG2 family, which is a group of transmembrane proteins preferentially expressed in NK cells. This family of proteins is characterized by the type II membrane orientation and the presence of a C-type lectin domain. This protein forms a complex with another family member, KLRD1/CD94, and has been implicated in the recognition of the MHC class I HLA-E molecules in NK cells. The genes of NKG2 family members form a killer cell lectin-like receptor gene cluster on chromosome 12. Four alternatively spliced transcript variants encoding two distinct isoforms have been observed.

Synonyms:

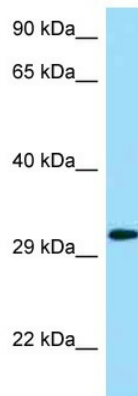
CD159A; MGC13374; MGC59791; NKG2; NKG2-A; NKG2-B; NKG2A

Protein Families:

Transmembrane

Protein Pathways:

Antigen processing and presentation, Graft-versus-host disease, Natural killer cell mediated cytotoxicity

Product images:

WB Suggested Anti-KLRC1 Antibody
Titration: 1.0 ug/ml
Positive Control: 293T Whole Cell