

Product datasheet for **TA357828**

Phb2 Rabbit Polyclonal Antibody

Product data:

Product Type:	Primary Antibodies
Applications:	IP, WB
Reactivity:	Mouse
Host:	Rabbit
Clonality:	Polyclonal
Specificity:	Expected reactivity: Cow, Dog, Guinea Pig, Horse, Human, Mouse, Rabbit, Rat, Yeast, Zebrafish Homology: Cow: 100%; Dog: 100%; Guinea Pig: 100%; Horse: 100%; Human: 100%; Mouse: 100%; Rabbit: 100%; Rat: 100%; Yeast: 86%; Zebrafish: 93%
Formulation:	Liquid. Purified antibody supplied in 1x PBS buffer with 0.09% (w/v) sodium azide and 2% sucrose. <i>Note that this product is shipped as lyophilized powder to China customers.</i>
Concentration:	lot specific
Purification:	Affinity Purified
Conjugation:	Unconjugated
Storage:	For short term use, store at 2-8°C up to 1 week. For long term storage, store at -20°C in small aliquots to prevent freeze-thaw cycles.
Stability:	Shelf life: one year from despatch.
Predicted Protein Size:	33kDa
Gene Name:	prohibitin 2
Database Link:	NP_031557 Entrez Gene 12034 Mouse Q3V235
Background:	The function of this protein remains unknown.
Synonyms:	BAP; Bap37; BCAP37; D-prohibitin; MGC117268; p22; PNAS-141; REA

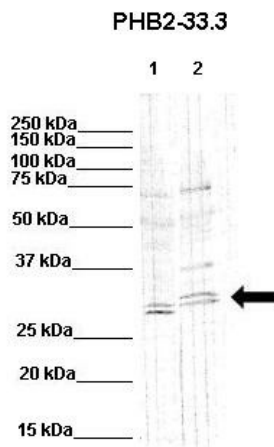


[View online »](#)

Product images:



Phb2 antibody - middle region (TA357828) validated by WB using Mouse Heart lysate at 1.0ug/ml.



WB Suggested Anti-Phb2 Antibody
 Positive Control: Lane 1: 80ug mouse brain extract
 Lane 2: 80ug rat brain extract
 Primary Antibody Dilution : 1:500
 Secondary Antibody : IRDye 800 CW goat anti-rabbit from Li-COR Bioscience
 Secondary Antibody Dilution : 1:20,000
 Submitted by: Dr. Yuzhi Chen, University of Arkansas for Medical Science