

Product datasheet for **TA357826**

Cathepsin V (CTSV) Rabbit Polyclonal Antibody

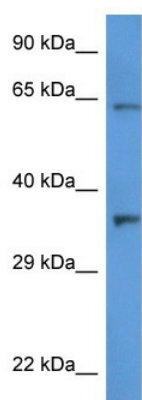
Product data:

Product Type:	Primary Antibodies
Applications:	WB
Reactivity:	Human
Host:	Rabbit
Clonality:	Polyclonal
Specificity:	Expected reactivity: Guinea Pig, Horse, Human, Mouse, Rabbit, Rat Homology: Guinea Pig: 79%; Horse: 79%; Human: 100%; Mouse: 79%; Rabbit: 86%; Rat: 79%
Formulation:	Liquid. Purified antibody supplied in 1x PBS buffer with 0.09% (w/v) sodium azide and 2% sucrose. <i>Note that this product is shipped as lyophilized powder to China customers.</i>
Concentration:	lot specific
Purification:	Affinity Purified
Conjugation:	Unconjugated
Storage:	For short term use, store at 2-8°C up to 1 week. For long term storage, store at -20°C in small aliquots to prevent freeze-thaw cycles.
Stability:	Shelf life: one year from despatch.
Predicted Protein Size:	37kDa
Gene Name:	cathepsin V
Database Link:	NP_001324 Entrez Gene 1515 Human O60911
Background:	The protein encoded by this gene, a member of the peptidase C1 family, is a lysosomal cysteine proteinase that may play an important role in corneal physiology. This gene is expressed in colorectal and breast carcinomas but not in normal colon, mammary gland, or peritumoral tissues, suggesting a possible role for this gene in tumor processes. Alternatively spliced variants, encoding the same protein, have been identified.
Protein Families:	Druggable Genome, Protease
Protein Pathways:	Lysosome



[View online »](#)

Product images:



WB Suggested Anti-CTSL2 Antibody
Titration: 1.0 ug/ml
Positive Control: HT1080 Whole Cell