

Product datasheet for TA357825

Phb Rabbit Polyclonal Antibody

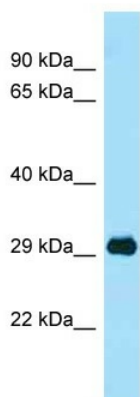
Product data:

Product Type:	Primary Antibodies
Applications:	IHC, WB
Reactivity:	Human, Mouse
Host:	Rabbit
Clonality:	Polyclonal
Specificity:	Expected reactivity: Cow, Dog, Goat, Guinea Pig, Horse, Human, Mouse, Rabbit, Rat, Yeast, Zebrafish Homology: Cow: 100%; Dog: 100%; Goat: 85%; Guinea Pig: 100%; Horse: 100%; Human: 100%; Mouse: 100%; Rabbit: 100%; Rat: 100%; Yeast: 92%; Zebrafish: 93%
Formulation:	Liquid. Purified antibody supplied in 1x PBS buffer with 0.09% (w/v) sodium azide and 2% sucrose. <i>Note that this product is shipped as lyophilized powder to China customers.</i>
Concentration:	lot specific
Purification:	Affinity Purified
Conjugation:	Unconjugated
Storage:	For short term use, store at 2-8°C up to 1 week. For long term storage, store at -20°C in small aliquots to prevent freeze-thaw cycles.
Stability:	Shelf life: one year from despatch.
Predicted Protein Size:	30kDa
Gene Name:	prohibitin
Database Link:	NP_032857 Entrez Gene 5245 Human Entrez Gene 18673 Mouse P67778
Background:	Prohibitin inhibits DNA synthesis. It has a role in regulating proliferation. As yet it is unclear if the protein or the mRNA exhibits this effect. Phb may play a role in regulating mitochondrial respiration activity and in aging.
Synonyms:	PHB1; prohibitin

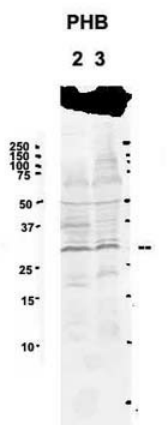


[View online »](#)

Product images:

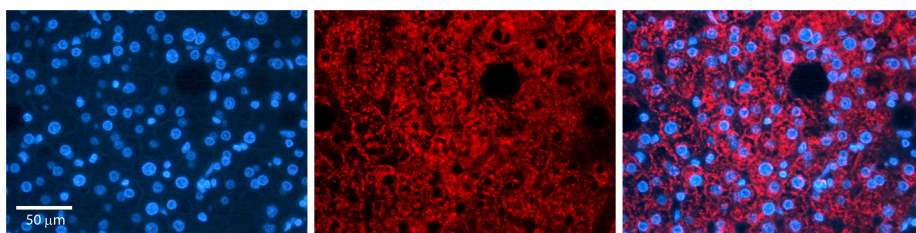


Phb antibody - C-terminal region (TA357825) validated by WB using Mouse Thymus at 1.0ug/ml.



See Immunoblot 2 Data for more information.

Sample Type: 2. mouse brain extracts (80ug)3. rat brain extract (80ug)
 Primary antibody dilution: 2ug/ml
 Secondary antibody: IRDye 800CW goat anti-rabbit from Li-COR Bioscience
 Secondary antibody dilution: 1: 20,000
 Image Submitted by: Yuzhi Chen University of Arkansas for Medical Science



Rabbit Anti-PHB Antibody
 Catalog Number: TA357825
 Formalin Fixed Paraffin Embedded Tissue:
 Human Liver Tissue
 Observed Staining: Cytoplasm in hepatocytes
 Primary Antibody Concentration: N/A
 Other Working Concentrations: 1:600
 Secondary Antibody: Donkey anti-Rabbit-Cy3
 Secondary Antibody Concentration: 1:200
 Magnification: 20X
 Exposure Time: 0.5-2.0 sec