

Product datasheet for **TA357820**

Hsp90aa1 Rabbit Polyclonal Antibody

Product data:

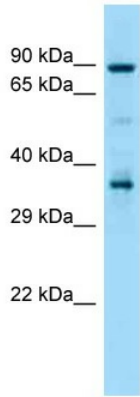
Product Type:	Primary Antibodies
Applications:	WB
Reactivity:	Mouse
Host:	Rabbit
Clonality:	Polyclonal
Specificity:	Expected reactivity: Cow, Dog, Goat, Guinea Pig, Horse, Human, Mouse, Rabbit, Rat, Sheep Homology: Cow: 100%; Dog: 100%; Goat: 100%; Guinea Pig: 100%; Horse: 100%; Human: 100%; Mouse: 100%; Rabbit: 100%; Rat: 100%; Sheep: 100%
Formulation:	Liquid. Purified antibody supplied in 1x PBS buffer with 0.09% (w/v) sodium azide and 2% sucrose. <i>Note that this product is shipped as lyophilized powder to China customers.</i>
Concentration:	lot specific
Purification:	Affinity Purified
Conjugation:	Unconjugated
Storage:	For short term use, store at 2-8°C up to 1 week. For long term storage, store at -20°C in small aliquots to prevent freeze-thaw cycles.
Stability:	Shelf life: one year from despatch.
Predicted Protein Size:	85kDa
Gene Name:	heat shock protein 90, alpha (cytosolic), class A member 1
Database Link:	NP_034610 Entrez Gene 15519 Mouse P07901
Background:	Hsp90aa1 is a molecular chaperone that promotes the maturation, structural maintenance and proper regulation of specific target proteins involved for instance in cell cycle control and signal transduction. Hsp90aa1 undergoes a functional cycle that is linked to its ATPase activity. This cycle probably induces conformational changes in the client proteins, thereby causing their activation. Hsp90aa1 interacts dynamically with various co-chaperones that modulate its substrate recognition, ATPase cycle and chaperone function.



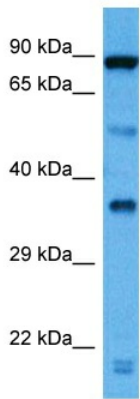
[View online »](#)

Synonyms: FLJ31884; HSP86; Hsp89; HSP89A; Hsp90; HSP90A; HSP90N; HSPC1; HSPCA; HSPCAL1; HSPCAL4; HSPN; LAP2

Product images:

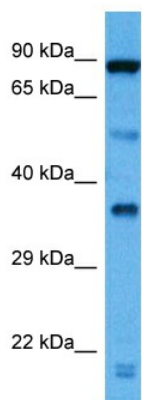


WB Suggested Anti-Hsp90aa1 Antibody
 Titration: 1.0 ug/ml
 Positive Control: Mouse Thymus



Host: Rabbit
 Target Name: Hsp90Aa1
 Sample Type: Mouse Pancreas Lysate
 Antibody Dilution: 1.0ug/ml

Host: Rabbit
 Target Name: HSP90AA1
 Sample Tissue: Mouse Pancreas
 Antibody Dilution: 1ug/ml



Host: Rabbit
Target Name: Hsp90Aa1
Sample Type: Mouse Pancreas Lysate
Antibody Dilution: 1.0 μ g/ml

Host: Mouse
Target Name: HSP90AA1
Sample Tissue: Mouse Pancreas
Antibody Dilution: 1 μ g/ml