

Product datasheet for **TA357819**

As1 Rabbit Polyclonal Antibody

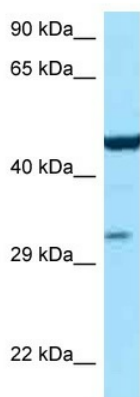
Product data:

Product Type:	Primary Antibodies
Applications:	WB
Reactivity:	Human, Mouse
Host:	Rabbit
Clonality:	Polyclonal
Specificity:	Expected reactivity: Cow, Dog, Goat, Guinea Pig, Horse, Human, Mouse, Rabbit, Rat, Yeast, Zebrafish Homology: Cow: 100%; Dog: 100%; Goat: 100%; Guinea Pig: 100%; Horse: 100%; Human: 100%; Mouse: 100%; Rabbit: 100%; Rat: 100%; Yeast: 100%; Zebrafish: 100%
Formulation:	Liquid. Purified antibody supplied in 1x PBS buffer with 0.09% (w/v) sodium azide and 2% sucrose. <i>Note that this product is shipped as lyophilized powder to China customers.</i>
Concentration:	lot specific
Purification:	Affinity Purified
Conjugation:	Unconjugated
Storage:	For short term use, store at 2-8°C up to 1 week. For long term storage, store at -20°C in small aliquots to prevent freeze-thaw cycles.
Stability:	Shelf life: one year from despatch.
Predicted Protein Size:	52kDa
Gene Name:	argininosuccinate lyase
Database Link:	NP_598529 Entrez Gene 435 Human Entrez Gene 109900 Mouse Q91YI0
Background:	The function of this protein remains unknown.
Synonyms:	argininosuccinase; Arginosuccinase; ASAL

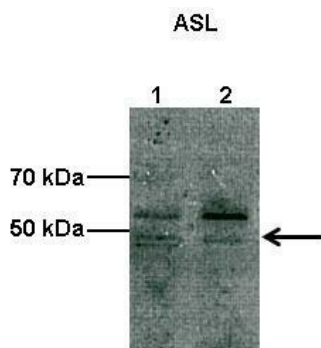


[View online »](#)

Product images:



WB Suggested Anti-Asl Antibody
Titration: 1.0 ug/ml
Positive Control: Mouse Liver



Lanes:
Lane1: 10 ug COS-7 cell lysate
Lane2: 10 ug bovine aortic endothelial cell lysate
Primary Antibody Dilution:
1:1000
Secondary Antibody:
Anti-rabbit HRP
Secondary Antibody Dilution:
1:2000
Gene Name:
Asl
Submitted by:
Shawn Elms. Georgia Health Science University

See Immunoblot 2 Data and Customer Feedback for more information