

Product datasheet for **TA357808**

Rab5a Rabbit Polyclonal Antibody

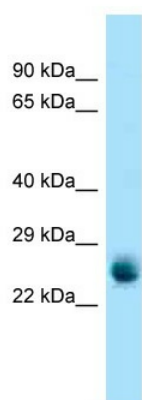
Product data:

Product Type:	Primary Antibodies
Applications:	WB
Reactivity:	Mouse
Host:	Rabbit
Clonality:	Polyclonal
Specificity:	Expected reactivity: Cow, Dog, Guinea Pig, Horse, Human, Mouse, Rabbit, Rat, Sheep, Zebrafish Homology: Cow: 100%; Dog: 100%; Guinea Pig: 100%; Horse: 100%; Human: 100%; Mouse: 100%; Rabbit: 100%; Rat: 100%; Sheep: 100%; Zebrafish: 100%
Formulation:	Liquid. Purified antibody supplied in 1x PBS buffer with 0.09% (w/v) sodium azide and 2% sucrose. <i>Note that this product is shipped as lyophilized powder to China customers.</i>
Concentration:	lot specific
Purification:	Affinity Purified
Conjugation:	Unconjugated
Storage:	For short term use, store at 2-8°C up to 1 week. For long term storage, store at -20°C in small aliquots to prevent freeze-thaw cycles.
Stability:	Shelf life: one year from despatch.
Predicted Protein Size:	24kDa
Gene Name:	RAB5A, member RAS oncogene family
Database Link:	NP_080163 Entrez Gene 271457 Mouse Q9CQD1
Background:	Rab5a is required for the fusion of plasma membranes and early endosomes. Rab5a contributes to the regulation of filopodia extension.
Synonyms:	RAB5



[View online »](#)

Product images:



WB Suggested Anti-Rab5a Antibody
Titration: 1.0 ug/ml
Positive Control: Mouse Pancreas