

Product datasheet for **TA357802**

Mapk1 Rabbit Polyclonal Antibody

Product data:

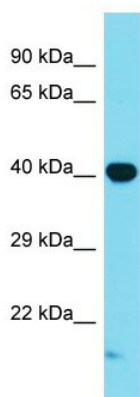
Product Type:	Primary Antibodies
Applications:	WB
Reactivity:	Mouse
Host:	Rabbit
Clonality:	Polyclonal
Immunogen:	The immunogen is a synthetic peptide directed towards the C-terminal region of Mouse Mapk1
Specificity:	Expected reactivity: Cow, Dog, Goat, Guinea Pig, Horse, Human, Mouse, Pig, Rabbit, Rat, Zebrafish Homology: Cow: 100%; Dog: 93%; Goat: 100%; Guinea Pig: 93%; Horse: 93%; Human: 93%; Mouse: 93%; Pig: 100%; Rabbit: 93%; Rat: 100%; Zebrafish: 100%
Formulation:	Liquid. Purified antibody supplied in 1x PBS buffer with 0.09% (w/v) sodium azide and 2% sucrose. <i>Note that this product is shipped as lyophilized powder to China customers.</i>
Concentration:	lot specific
Purification:	Affinity Purified
Conjugation:	Unconjugated
Storage:	For short term use, store at 2-8°C up to 1 week. For long term storage, store at -20°C in small aliquots to prevent freeze-thaw cycles.
Stability:	Shelf life: one year from despatch.
Predicted Protein Size:	41kDa
Gene Name:	mitogen-activated protein kinase 1
Database Link:	NP_036079 Entrez Gene 26413 Mouse P63085
Background:	Mapk1 is a serine/threonine kinase which acts as an essential component of the MAP kinase signal transduction pathway.



[View online »](#)

Synonyms: ERK; ERK-2; ERK2; ERT1; MAPK2; p38; p40; p41; p41 mapk; p42-MAPK; P42MAPK; PRKM1; PRKM2

Product images:



Host: Rabbit
Target Name: Mapk1
Sample Type: Mouse Brain lysates
Antibody Dilution: 1.0ug/ml