

Product datasheet for **TA357801**

Prom1 Rabbit Polyclonal Antibody

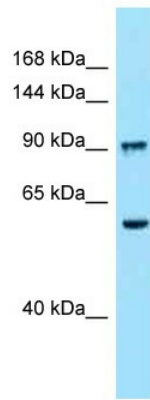
Product data:

Product Type:	Primary Antibodies
Applications:	WB
Reactivity:	Mouse
Host:	Rabbit
Clonality:	Polyclonal
Specificity:	Expected reactivity: Cow, Dog, Guinea Pig, Horse, Human, Mouse, Rat, Zebrafish Homology: Cow: 86%; Dog: 86%; Guinea Pig: 93%; Horse: 92%; Human: 100%; Mouse: 85%; Rat: 91%; Zebrafish: 92%
Formulation:	Liquid. Purified antibody supplied in 1x PBS buffer with 0.09% (w/v) sodium azide and 2% sucrose. <i>Note that this product is shipped as lyophilized powder to China customers.</i>
Concentration:	lot specific
Purification:	Affinity Purified
Conjugation:	Unconjugated
Storage:	For short term use, store at 2-8°C up to 1 week. For long term storage, store at -20°C in small aliquots to prevent freeze-thaw cycles.
Stability:	Shelf life: one year from despatch.
Predicted Protein Size:	95kDa
Gene Name:	prominin 1
Database Link:	NP_001157049 Entrez Gene 19126 Mouse O54990
Background:	Prom1 binds cholesterol in cholesterol-containing plasma membrane microdomains. It is proposed to play a role in apical plasma membrane organization of epithelial cells. During early during retinal development, Prom1 acts as a key regulator of disk morphogenesis. Prom1 is involved in regulation of MAPK and Akt signaling pathways. In neuroblastoma cells suppresses cell differentiation such as neurite outgrowth in a RET-dependent manner.
Synonyms:	AC133; CD133; CORD12; hProminin; MCDR2; MSTP061; PROML1; RP41; STGD4

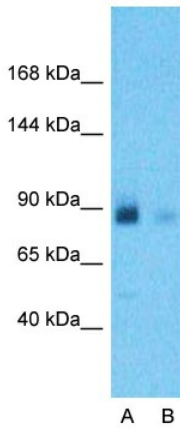


[View online »](#)

Product images:



WB Suggested Anti-Prom1 Antibody
Titration: 1.0 ug/ml
Positive Control: Mouse Liver



Anti-Prom1 Western Blot & Peptide Block Validation

Lot Number: QC33584

Lysate: Mouse Liver

Lane A: Primary Antibody
Lane B: Primary Antibody + Blocking Peptide

Primary Antibody Concentration: 1.0µg/ml
Peptide Concentration: 5.0µg/ml
Lysate Quantity: 25µg/lane
Gel Concentration: 12%

Host: Rabbit
Target Name: Prom1
Sample Type: Mouse Liver
Lane A: Primary Antibody
Lane B: Primary Antibody + Blocking Peptide
Primary Antibody Concentration: 1ug/ml
Peptide Concentration: 5ug/ml
Lysate Quantity: 25ug/lane/Lane
Gel Concentration: 0.12