

Product datasheet for **TA357793**

Map2k1 Rabbit Polyclonal Antibody

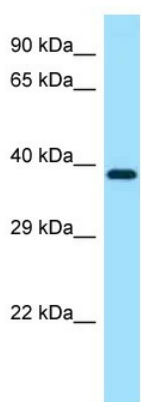
Product data:

Product Type:	Primary Antibodies
Applications:	WB
Reactivity:	Human, Mouse
Host:	Rabbit
Clonality:	Polyclonal
Specificity:	Expected reactivity: Cow, Dog, Goat, Guinea Pig, Horse, Human, Mouse, Rabbit, Rat, Zebrafish Homology: Cow: 100%; Dog: 93%; Goat: 100%; Guinea Pig: 100%; Horse: 100%; Human: 100%; Mouse: 100%; Rabbit: 100%; Rat: 100%; Zebrafish: 92%
Formulation:	Liquid. Purified antibody supplied in 1x PBS buffer with 0.09% (w/v) sodium azide and 2% sucrose. <i>Note that this product is shipped as lyophilized powder to China customers.</i>
Concentration:	lot specific
Purification:	Affinity Purified
Conjugation:	Unconjugated
Storage:	For short term use, store at 2-8°C up to 1 week. For long term storage, store at -20°C in small aliquots to prevent freeze-thaw cycles.
Stability:	Shelf life: one year from despatch.
Predicted Protein Size:	43kDa
Gene Name:	mitogen-activated protein kinase kinase 1
Database Link:	NP_032953 Entrez Gene 5604 Human Entrez Gene 26395 Mouse Q9JJE1
Background:	The function of this protein remains unknown.
Synonyms:	MAPKK1; MEK1; MKK1; PRKMK1



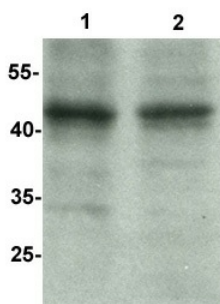
[View online »](#)

Product images:



Map2k1 antibody - C-terminal region (TA357793) validated by WB using Mouse Small Intestine Lysate at 1ug/ml.

Map2k1



Sample Type: 1. and 2. Human Cystic Fibrosis Bronchial Epithelial Cells (35ug) Primary Dilution: 1:500 Secondary Anitbody: goat anti-rabbit-HRP Secondary Dilution: 1:5000 Image Submitted By: Dr. Haouaria Balghi McGill University

See Immunoblot 2 Data and Customer Feedback tab for more information.