

Product datasheet for **TA357786**

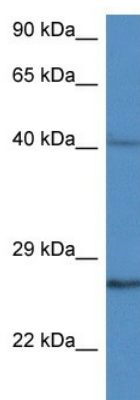
CCS Rabbit Polyclonal Antibody

Product data:

Product Type:	Primary Antibodies
Applications:	WB
Reactivity:	Human
Host:	Rabbit
Clonality:	Polyclonal
Specificity:	Expected reactivity: Cow, Dog, Horse, Human, Mouse, Pig, Rabbit, Rat Homology: Cow: 86%; Dog: 79%; Horse: 86%; Human: 100%; Mouse: 86%; Pig: 86%; Rabbit: 93%; Rat: 86%
Formulation:	Liquid. Purified antibody supplied in 1x PBS buffer with 0.09% (w/v) sodium azide and 2% sucrose. <i>Note that this product is shipped as lyophilized powder to China customers.</i>
Concentration:	lot specific
Purification:	Affinity Purified
Conjugation:	Unconjugated
Storage:	For short term use, store at 2-8°C up to 1 week. For long term storage, store at -20°C in small aliquots to prevent freeze-thaw cycles.
Stability:	Shelf life: one year from despatch.
Predicted Protein Size:	29kDa
Gene Name:	copper chaperone for superoxide dismutase
Database Link:	NP_005116 Entrez Gene 9973 Human Q14618
Background:	Copper chaperone for superoxide dismutase specifically delivers Cu to copper/zinc superoxide dismutase and may activate copper/zinc superoxide dismutase through direct insertion of the Cu cofactor.
Synonyms:	MGC138260
Protein Families:	Druggable Genome
Protein Pathways:	Amyotrophic lateral sclerosis (ALS)



[View online »](#)

Product images:

WB Suggested Anti-CCS Antibody
Titration: 1.0 ug/ml

Positive Control: MDA-MB-4355 Whole Cell
CCS is supported by BioGPS gene expression data to be expressed in MDA-MB435