

## Product datasheet for **TA357779**

### Trypsin (PRSS1) Rabbit Polyclonal Antibody

#### Product data:

Product Type:	Primary Antibodies
Applications:	WB
Reactivity:	Human
Host:	Rabbit
Clonality:	Polyclonal
Specificity:	<b>Expected reactivity:</b> Cow, Dog, Guinea Pig, Horse, Human, Mouse, Rabbit, Rat, Zebrafish <b>Homology:</b> Cow: 93%; Dog: 93%; Guinea Pig: 93%; Horse: 86%; Human: 100%; Mouse: 86%; Rabbit: 93%; Rat: 93%; Zebrafish: 86%
Formulation:	Liquid. Purified antibody supplied in 1x PBS buffer with 0.09% (w/v) sodium azide and 2% sucrose. <i>Note that this product is shipped as lyophilized powder to China customers.</i>
Concentration:	lot specific
Purification:	Affinity Purified
Conjugation:	Unconjugated
Storage:	For short term use, store at 2-8°C up to 1 week. For long term storage, store at -20°C in small aliquots to prevent freeze-thaw cycles.
Stability:	Shelf life: one year from despatch.
Predicted Protein Size:	24kDa
Gene Name:	protease, serine 1
Database Link:	<a href="#">NP_002760</a> <a href="#">Entrez Gene 5644 Human P07477</a>
Background:	This gene encodes a trypsinogen, which is a member of the trypsin family of serine proteases. This enzyme is secreted by the pancreas and cleaved to its active form in the small intestine. It is active on peptide linkages involving the carboxyl group of lysine or arginine. Mutations in this gene are associated with hereditary pancreatitis. This gene and several other trypsinogen genes are localized to the T cell receptor beta locus on chromosome 7.
Synonyms:	Beta-trypsin; MGC120175; MGC149362; TRP1; TRY1; TRY4; TRYP1

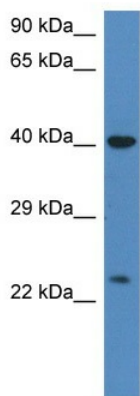


[View online »](#)

Protein Families: Druggable Genome, Secreted Protein

Protein Pathways: Neuroactive ligand-receptor interaction

### Product images:



WB Suggested Anti-PRSS1 Antibody  
Titration: 1.0 ug/ml  
Positive Control: HT1080 Whole Cell