

Product datasheet for **TA357777**

Actin (ACTA1) Rabbit Polyclonal Antibody

Product data:

Product Type:	Primary Antibodies
Applications:	WB
Reactivity:	Human, Baboon
Host:	Rabbit
Clonality:	Polyclonal
Specificity:	Expected reactivity: Cow, Dog, Guinea Pig, Horse, Human, Mouse, Rabbit, Rat, Yeast, Zebrafish Homology: Cow: 100%; Dog: 100%; Guinea Pig: 100%; Horse: 100%; Human: 100%; Mouse: 100%; Rabbit: 100%; Rat: 100%; Yeast: 100%; Zebrafish: 100%
Formulation:	Liquid. Purified antibody supplied in 1x PBS buffer with 0.09% (w/v) sodium azide and 2% sucrose. <i>Note that this product is shipped as lyophilized powder to China customers.</i>
Concentration:	lot specific
Purification:	Affinity Purified
Conjugation:	Unconjugated
Storage:	For short term use, store at 2-8°C up to 1 week. For long term storage, store at -20°C in small aliquots to prevent freeze-thaw cycles.
Stability:	Shelf life: one year from despatch.
Predicted Protein Size:	42kDa
Gene Name:	actin, alpha 1, skeletal muscle
Database Link:	NP_001091 Entrez Gene 58 Human P68133



[View online »](#)

Background:

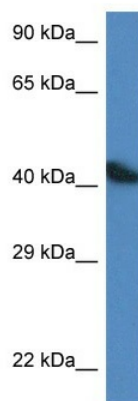
The product encoded by this gene belongs to the actin family of proteins, which are highly conserved proteins that play a role in cell motility, structure and integrity. Alpha, beta and gamma actin isoforms have been identified, with alpha actins being a major constituent of the contractile apparatus, while beta and gamma actins are involved in the regulation of cell motility. This actin is an alpha actin that is found in skeletal muscle. Mutations in this gene cause nemaline myopathy type 3, congenital myopathy with excess of thin myofilaments, congenital myopathy with cores, and congenital myopathy with fiber-type disproportion, diseases that lead to muscle fiber defects.

Synonyms:

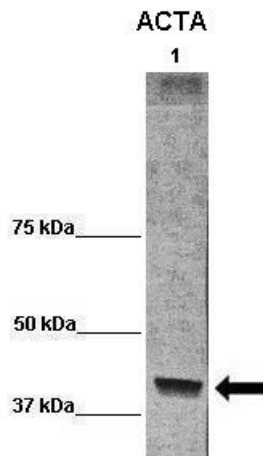
ACTA; Alpha-actin-1; ASMA; CFTD; CFTD1; CFTDM; MPFD; NEM1; NEM2; NEM3

Protein Families:

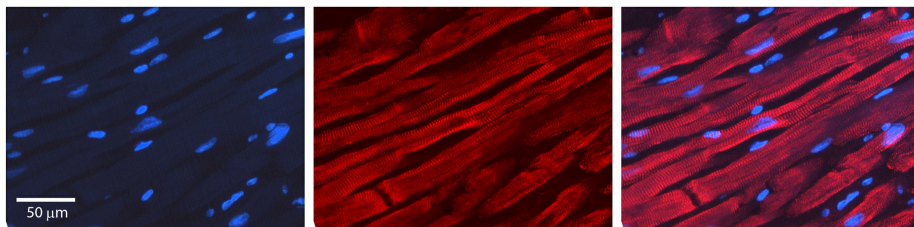
Stem cell - Pluripotency

Product images:


WB Suggested Anti-ACTA1 Antibody
Titration: 1.0 ug/ml
Positive Control: A549 Whole Cell



WB Suggested Anti-ACTA1 Antibody
Positive Control: Lane 1: 50ug term baboon muscle homogenate
Primary Antibody Dilution : 1:1666
Secondary Antibody : Anti-rabbit-HRP
Secondary Antibody Dilution : 1:1200
Submitted by: Cynthia Blanco, University of Texas Health Science Center



Rabbit Anti-ACTA1 Antibody
Catalog Number: TA357777
Formalin Fixed Paraffin Embedded Tissue:
Human Heart Muscle Tissue
Observed Staining: Cytoplasm
Primary Antibody Concentration: 1:100
Other Working Concentrations: 1:600
Secondary Antibody: Donkey anti-Rabbit-Cy3
Secondary Antibody Concentration: 1:200
Magnification: 20X
Exposure Time: 0.5-2.0 sec