

Product datasheet for TA357774

LYG2 Rabbit Polyclonal Antibody

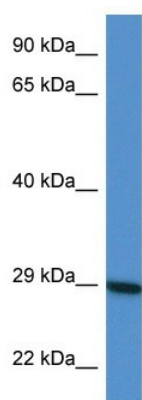
Product data:

Product Type:	Primary Antibodies
Applications:	WB
Reactivity:	Human
Host:	Rabbit
Clonality:	Polyclonal
Specificity:	Expected reactivity: Cow, Dog, Guinea Pig, Horse, Human, Mouse, Rabbit, Rat Homology: Cow: 79%; Dog: 86%; Guinea Pig: 79%; Horse: 86%; Human: 100%; Mouse: 86%; Rabbit: 86%; Rat: 86%
Formulation:	Liquid. Purified antibody supplied in 1x PBS buffer with 0.09% (w/v) sodium azide and 2% sucrose. <i>Note that this product is shipped as lyophilized powder to China customers.</i>
Concentration:	lot specific
Purification:	Affinity Purified
Conjugation:	Unconjugated
Storage:	For short term use, store at 2-8°C up to 1 week. For long term storage, store at -20°C in small aliquots to prevent freeze-thaw cycles.
Stability:	Shelf life: one year from despatch.
Predicted Protein Size:	23kDa
Gene Name:	lysozyme g2
Database Link:	NP_783862 Entrez Gene 254773 Human Q86SG7
Background:	The protein encoded by this gene contains a SLT domain, a protein domain present in bacterial lytic transglycosylase (SLT) and in eukaryotic lysozymes (GEWL). SLT domain catalyzes the cleavage of the beta-1,4-glycosidic bond between N-acetylmuramic acid (MurNAc) and N-acetylglucosamine (GlcNAc).
Synonyms:	LYGH; lysozyme-like; MGC119046; MGC119047; MGC119049; OTTHUMP00000203478
Protein Families:	Secreted Protein



[View online »](#)

Product images:



WB Suggested Anti-LYG2 Antibody
Titration: 1.0 ug/ml
Positive Control: HepG2 Whole Cell