

Product datasheet for TA357763

Nelfa Rabbit Polyclonal Antibody

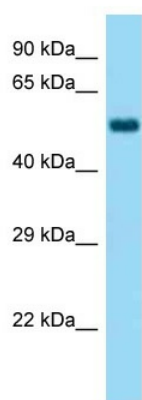
Product data:

Product Type:	Primary Antibodies
Applications:	WB
Reactivity:	Mouse
Host:	Rabbit
Clonality:	Polyclonal
Specificity:	Expected reactivity: Cow, Human, Mouse, Pig, Rat Homology: Cow: 85%; Human: 100%; Mouse: 100%; Pig: 78%; Rat: 100%
Formulation:	Liquid. Purified antibody supplied in 1x PBS buffer with 0.09% (w/v) sodium azide and 2% sucrose. <i>Note that this product is shipped as lyophilized powder to China customers.</i>
Concentration:	lot specific
Purification:	Affinity Purified
Conjugation:	Unconjugated
Storage:	For short term use, store at 2-8°C up to 1 week. For long term storage, store at -20°C in small aliquots to prevent freeze-thaw cycles.
Stability:	Shelf life: one year from despatch.
Predicted Protein Size:	57kDa
Gene Name:	negative elongation factor complex member A, Whsc2
Database Link:	NP_036044 Entrez Gene 24116 Mouse Q8BG30
Background:	The function of this protein is unknown.
Synonyms:	NELF-A; P/OKcl.15; WHSC2



[View online »](#)

Product images:



WB Suggested Anti-Whsc2 Antibody
Titration: 1.0 ug/ml
Positive Control: Mouse Brain