

## Product datasheet for **TA357762**

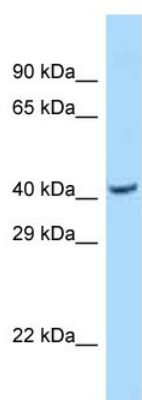
### PSKH2 Rabbit Polyclonal Antibody

#### Product data:

Product Type:	Primary Antibodies
Applications:	WB
Reactivity:	Human
Host:	Rabbit
Clonality:	Polyclonal
Specificity:	<b>Expected reactivity:</b> Dog, Guinea Pig, Horse, Human, Rat <b>Homology:</b> Dog: 91%; Guinea Pig: 92%; Horse: 92%; Human: 100%; Rat: 83%
Formulation:	Liquid. Purified antibody supplied in 1x PBS buffer with 0.09% (w/v) sodium azide and 2% sucrose. <i>Note that this product is shipped as lyophilized powder to China customers.</i>
Concentration:	lot specific
Purification:	Affinity Purified
Conjugation:	Unconjugated
Storage:	For short term use, store at 2-8°C up to 1 week. For long term storage, store at -20°C in small aliquots to prevent freeze-thaw cycles.
Stability:	Shelf life: one year from despatch.
Predicted Protein Size:	43kDa
Gene Name:	protein serine kinase H2
Database Link:	<a href="#">NP_149117</a> <a href="#">Entrez Gene 85481 Human</a> <a href="#">Q96QS6</a>
Background:	The function of this protein remains unknown.
Synonyms:	PSK-H2
Protein Families:	Druggable Genome, Protein Kinase



[View online »](#)

**Product images:**

WB Suggested Anti-PSKH2 Antibody  
Titration: 1.0 ug/ml  
Positive Control: Fetal Lung