

Product datasheet for **TA357761**

Gfm1 Rabbit Polyclonal Antibody

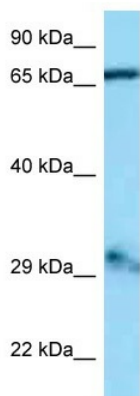
Product data:

Product Type:	Primary Antibodies
Applications:	WB
Reactivity:	Mouse
Host:	Rabbit
Clonality:	Polyclonal
Specificity:	Expected reactivity: Cow, Dog, Guinea Pig, Horse, Human, Mouse, Pig, Rabbit, Rat Homology: Cow: 100%; Dog: 100%; Guinea Pig: 92%; Horse: 100%; Human: 100%; Mouse: 100%; Pig: 100%; Rabbit: 100%; Rat: 100%
Formulation:	Liquid. Purified antibody supplied in 1x PBS buffer with 0.09% (w/v) sodium azide and 2% sucrose. <i>Note that this product is shipped as lyophilized powder to China customers.</i>
Concentration:	lot specific
Purification:	Affinity Purified
Conjugation:	Unconjugated
Storage:	For short term use, store at 2-8°C up to 1 week. For long term storage, store at -20°C in small aliquots to prevent freeze-thaw cycles.
Stability:	Shelf life: one year from despatch.
Predicted Protein Size:	83kDa
Gene Name:	G elongation factor, mitochondrial 1
Database Link:	NP_613057 Entrez Gene 28030 Mouse Q8K0D5
Background:	Gfm1 is a mitochondrial GTPase that catalyzes the GTP-dependent ribosomal translocation step during translation elongation. During this step, the ribosome changes from the pre-translocational (PRE) to the post-translocational (POST) state as the newly formed A-site-bound peptidyl-tRNA and P-site-bound deacylated tRNA move to the P and E sites, respectively. Gfm1 catalyzes the coordinated movement of the two tRNA molecules, the mRNA and conformational changes in the ribosome. Gfm1 does not mediate the disassembly of ribosomes from messenger RNA at the termination of mitochondrial protein biosynthesis.



[View online »](#)

Synonyms: COXPD1; EF-Gmt; EFG; EFG1; EFGM; EGF1; FLJ12662; FLJ13632; FLJ20773; GFM; hEFG1

Product images:

WB Suggested Anti-Gfm1 Antibody
Titration: 1.0 ug/ml
Positive Control: Mouse Heart