

## Product datasheet for **TA357760**

### ZC3H12C Rabbit Polyclonal Antibody

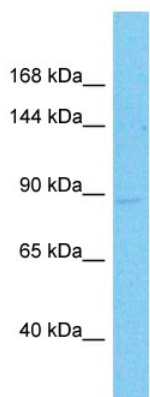
#### Product data:

Product Type:	Primary Antibodies
Applications:	WB
Reactivity:	Human
Host:	Rabbit
Clonality:	Polyclonal
Immunogen:	The immunogen for Anti-ZC3H12C antibody is: synthetic peptide directed towards the C-terminal region of Human ZC12C
Specificity:	<b>Expected reactivity:</b> Cow, Dog, Guinea Pig, Horse, Human, Mouse, Pig, Rabbit, Rat, Zebrafish <b>Homology:</b> Cow: 100%; Dog: 100%; Guinea Pig: 93%; Horse: 100%; Human: 100%; Mouse: 100%; Pig: 100%; Rabbit: 100%; Rat: 100%; Zebrafish: 92%
Formulation:	Liquid. Purified antibody supplied in 1x PBS buffer with 0.09% (w/v) sodium azide and 2% sucrose.
Concentration:	lot specific
Purification:	Affinity purified
Conjugation:	Unconjugated
Storage:	For short term use, store at 2-8°C up to 1 week. For long term storage, store at -20°C in small aliquots to prevent freeze-thaw cycles.
Stability:	Shelf life: one year from despatch.
Predicted Protein Size:	97 kDa
Gene Name:	zinc finger CCCH-type containing 12C
Database Link:	<a href="#">Entrez Gene 85463 Human Q9C0D7</a>
Synonyms:	KIAA1726; MCPIP3



[View online »](#)

## Product images:



Host: Rabbit  
Target Name: ZC12C  
Sample Tissue: Lymph Node Tumor Lysate  
Antibody Dilution: 1.0 $\mu$ g/ml

Host: Rabbit  
Target Name: ZC12C  
Sample Type: Lymph Node Tumor  
Antibody Dilution: 1.0 $\mu$ g/ml