

Product datasheet for **TA357757**

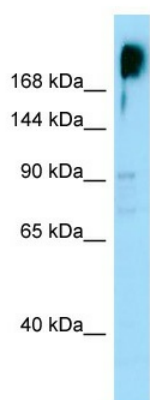
KNDC1 Rabbit Polyclonal Antibody

Product data:

Product Type:	Primary Antibodies
Applications:	WB
Reactivity:	Human
Host:	Rabbit
Clonality:	Polyclonal
Specificity:	Expected reactivity: Human Homology: Human: 100%
Formulation:	Liquid. Purified antibody supplied in 1x PBS buffer with 0.09% (w/v) sodium azide and 2% sucrose.
Concentration:	lot specific
Purification:	Affinity Purified
Conjugation:	Unconjugated
Storage:	For short term use, store at 2-8°C up to 1 week. For long term storage, store at -20°C in small aliquots to prevent freeze-thaw cycles.
Stability:	Shelf life: one year from despatch.
Predicted Protein Size:	191kDa
Gene Name:	kinase non-catalytic C-lobe domain (KIND) containing 1
Database Link:	NP_689856 Entrez Gene 85442 Human Q76NI1
Background:	KNDC1 is a probable guanine nucleotide exchange factor (GEF).
Synonyms:	bB439H18.3; C10orf23; FLJ16067; FLJ25027; KIAA1768; RASGEF2; VKIND



[View online »](#)

Product images:


WB Suggested Anti-KNDC1 Antibody
 Titration: 1.0 ug/ml
 Positive Control: PANC1 Whole Cell