

## Product datasheet for **TA357750**

### KRTAP2-1 Rabbit Polyclonal Antibody

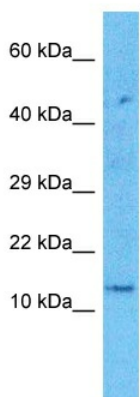
#### Product data:

Product Type:	Primary Antibodies
Applications:	WB
Reactivity:	Human
Host:	Rabbit
Clonality:	Polyclonal
Immunogen:	The immunogen is a synthetic peptide directed towards the C-terminal region of Human KRA21
Specificity:	<b>Expected reactivity:</b> Human, Mouse, Rat <b>Homology:</b> Human: 100%; Mouse: 83%; Rat: 83%
Formulation:	Liquid. Purified antibody supplied in 1x PBS buffer with 0.09% (w/v) sodium azide and 2% sucrose.
Concentration:	lot specific
Purification:	Affinity purified
Conjugation:	Unconjugated
Storage:	For short term use, store at 2-8°C up to 1 week. For long term storage, store at -20°C in small aliquots to prevent freeze-thaw cycles.
Stability:	Shelf life: one year from despatch.
Predicted Protein Size:	14kDa
Gene Name:	keratin associated protein 2-1
Database Link:	<a href="#">NP_001116859</a> <a href="#">Entrez Gene 81872 Human</a> <a href="#">Q9BYU5</a>



[View online »](#)

Product images:



Host: Rabbit  
Target Name: KRA21  
Sample Tissue: 786-0 Cell Lysate  
Antibody Dilution: 1.0µg/ml

Host: Rabbit  
Target Name: KRA21  
Sample Type: 786-0 Whole Cell lysates  
Antibody Dilution: 1.0ug/ml