

Product datasheet for **TA357746**

RAB33B Rabbit Polyclonal Antibody

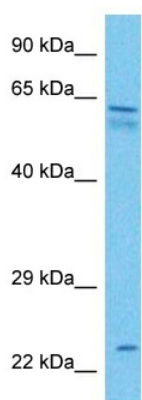
Product data:

Product Type:	Primary Antibodies
Applications:	WB
Reactivity:	Human
Host:	Rabbit
Clonality:	Polyclonal
Immunogen:	The immunogen for Anti-RAB33B antibody is: synthetic peptide directed towards the C-terminal region of Human RB33B
Specificity:	Expected reactivity: Cow, Dog, Guinea Pig, Horse, Human, Mouse, Pig, Rabbit, Rat Homology: Cow: 100%; Dog: 100%; Guinea Pig: 79%; Horse: 100%; Human: 100%; Mouse: 100%; Pig: 100%; Rabbit: 100%; Rat: 100%
Formulation:	Liquid. Purified antibody supplied in 1x PBS buffer with 0.09% (w/v) sodium azide and 2% sucrose. <i>Note that this product is shipped as lyophilized powder to China customers.</i>
Concentration:	lot specific
Purification:	Affinity purified
Conjugation:	Unconjugated
Storage:	For short term use, store at 2-8°C up to 1 week. For long term storage, store at -20°C in small aliquots to prevent freeze-thaw cycles.
Stability:	Shelf life: one year from despatch.
Predicted Protein Size:	25 kDa
Gene Name:	RAB33B, member RAS oncogene family
Database Link:	NP_112586.1 Entrez Gene 83452 Human Q9H082
Background:	Small GTP-binding proteins of the RAB family, such as RAB33B, play important roles at defined steps of vesicular transport in protein secretion and the endocytosis pathway (Zheng et al., 1998 [PubMed 9512502]).[supplied by OMIM, Feb 2010]
Synonyms:	DKFZP434G099; MGC138182



[View online »](#)

Product images:



Host: Rabbit
Target Name: RB33B
Sample Tissue: Large intestine Tumor Lysate
Antibody Dilution: 1.0 μ g/ml

Host: Rabbit
Target Name: RB33B
Sample Type: Large intestine Tumor
Antibody Dilution: 1.0 μ g/ml