

## Product datasheet for **TA357745**

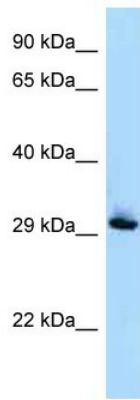
### **RAB33B Rabbit Polyclonal Antibody**

#### **Product data:**

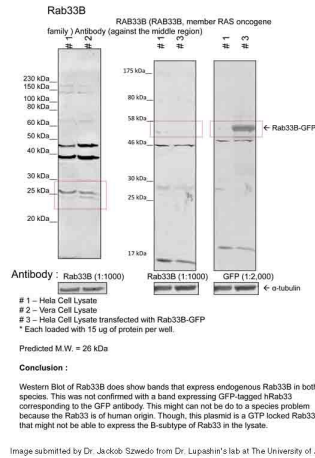
Product Type:	Primary Antibodies
Applications:	WB
Reactivity:	Human
Host:	Rabbit
Clonality:	Polyclonal
Specificity:	<b>Expected reactivity:</b> Cow, Dog, Guinea Pig, Horse, Human, Mouse, Rabbit, Rat, Yeast, Zebrafish <b>Homology:</b> Cow: 93%; Dog: 100%; Guinea Pig: 100%; Horse: 100%; Human: 100%; Mouse: 100%; Rabbit: 100%; Rat: 100%; Yeast: 92%; Zebrafish: 100%
Formulation:	Liquid. Purified antibody supplied in 1x PBS buffer with 0.09% (w/v) sodium azide and 2% sucrose. <i>Note that this product is shipped as lyophilized powder to China customers.</i>
Concentration:	lot specific
Purification:	Affinity Purified
Conjugation:	Unconjugated
Storage:	For short term use, store at 2-8°C up to 1 week. For long term storage, store at -20°C in small aliquots to prevent freeze-thaw cycles.
Stability:	Shelf life: one year from despatch.
Predicted Protein Size:	26kDa
Gene Name:	RAB33B, member RAS oncogene family
Database Link:	<a href="#">NP_112586</a> <a href="#">Entrez Gene 83452 Human</a> <a href="#">Q9H082</a>
Background:	Small GTP-binding proteins of the RAB family, such as RAB33B, play important roles at defined steps of vesicular transport in protein secretion and the endocytosis pathway.
Synonyms:	DKFZP434G099; MGC138182
Protein Families:	Druggable Genome



[View online »](#)

**Product images:**


RAB33B antibody - middle region (TA357745) validated by WB using Jurkat cell lysate at 1ug/ml.



Sample Type: 1. Human Cervical Cancer Cell Lysate (15ug)2. Monkey Fibroblast Cell Lysate (15ug)Primary Dilution: 1:1000Secondary Antibody: goat anti-RabbitSecondary Dilution: 1:40,000Image Submitted by: Dr. Jakob Szewdo, Dr. Lupashin's LabUniversity of Arkansas for Medical Sciences