

## Product datasheet for **TA357737**

### FUT8 Rabbit Polyclonal Antibody

#### Product data:

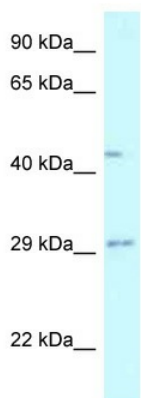
Product Type:	Primary Antibodies
Applications:	WB
Reactivity:	Human
Host:	Rabbit
Clonality:	Polyclonal
Specificity:	<b>Expected reactivity:</b> Cow, Dog, Guinea Pig, Horse, Human, Mouse, Pig, Rabbit, Rat, Zebrafish <b>Homology:</b> Cow: 100%; Dog: 100%; Guinea Pig: 93%; Horse: 100%; Human: 100%; Mouse: 93%; Pig: 100%; Rabbit: 100%; Rat: 100%; Zebrafish: 85%
Formulation:	Liquid. Purified antibody supplied in 1x PBS buffer with 0.09% (w/v) sodium azide and 2% sucrose. <i>Note that this product is shipped as lyophilized powder to China customers.</i>
Concentration:	lot specific
Purification:	Affinity Purified
Conjugation:	Unconjugated
Storage:	For short term use, store at 2-8°C up to 1 week. For long term storage, store at -20°C in small aliquots to prevent freeze-thaw cycles.
Stability:	Shelf life: one year from despatch.
Predicted Protein Size:	47kDa
Gene Name:	fucosyltransferase 8
Database Link:	<a href="#">NP_004471</a> <a href="#">Entrez Gene 2530 Human</a> <a href="#">Q9BYC5</a>
Background:	This gene encodes an enzyme belonging to the family of fucosyltransferases. The product of this gene catalyzes the transfer of fucose from GDP-fucose to N-linked type complex glycopeptides. This enzyme is distinct from other fucosyltransferases which catalyze alpha1-2, alpha1-3, and alpha1-4 fucose addition. The expression of this gene may contribute to the malignancy of cancer cells and to their invasive and metastatic capabilities. Alternative splicing results in multiple transcript variants.



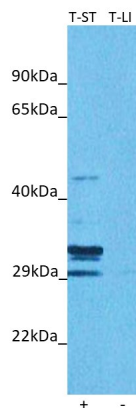
[View online »](#)

**Synonyms:** alpha1-6FucT; MGC26465  
**Protein Families:** Transmembrane  
**Protein Pathways:** Keratan sulfate biosynthesis, Metabolic pathways, N-Glycan biosynthesis

**Product images:**



WB Suggested Anti-FUT8 Antibody  
 Titration: 1.0 ug/ml  
 Positive Control: Fetal Liver



Host: Rabbit  
 Target name: FUT8  
 Positive control: ~25ug Human Stomach Tumor (T-ST)  
 Negative control: ~25ug Human Liver Tumor (T-LI)  
 Antibody concentration: 3ug/ml

Host: Rabbit  
 Target: FUT8  
 Positive control (+): Human Stomach Tumor (T-ST)  
 Negative control (-): Human Liver Tumor (T-LI)  
 Antibody concentration: 3ug/ml