

## Product datasheet for **TA357734**

### SDCCAG10 (CWC27) Rabbit Polyclonal Antibody

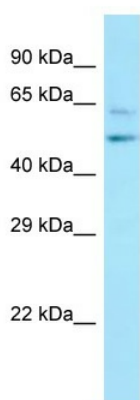
#### Product data:

Product Type:	Primary Antibodies
Applications:	WB
Reactivity:	Human
Host:	Rabbit
Clonality:	Polyclonal
Specificity:	<b>Expected reactivity:</b> Cow, Dog, Horse, Human <b>Homology:</b> Cow: 79%; Dog: 86%; Horse: 100%; Human: 100%
Formulation:	Liquid. Purified antibody supplied in 1x PBS buffer with 0.09% (w/v) sodium azide and 2% sucrose. <i>Note that this product is shipped as lyophilized powder to China customers.</i>
Concentration:	lot specific
Purification:	Affinity Purified
Conjugation:	Unconjugated
Storage:	For short term use, store at 2-8°C up to 1 week. For long term storage, store at -20°C in small aliquots to prevent freeze-thaw cycles.
Stability:	Shelf life: one year from despatch.
Predicted Protein Size:	54kDa
Gene Name:	CWC27 spliceosome associated protein homolog
Database Link:	<a href="#">NP_005860</a> <a href="#">Entrez Gene 10283 Human</a> <a href="#">Q6UX04</a>
Background:	PPIases accelerate the folding of proteins.
Synonyms:	NY-CO-10; SDCCAG10



[View online »](#)

Product images:



WB Suggested Anti-CWC27 Antibody  
Titration: 1.0 ug/ml  
Positive Control: Jurkat Whole Cell