

Product datasheet for **TA357729**

PNMA6A Rabbit Polyclonal Antibody

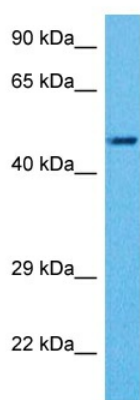
Product data:

Product Type:	Primary Antibodies
Applications:	WB
Reactivity:	Human
Host:	Rabbit
Clonality:	Polyclonal
Immunogen:	The immunogen is a synthetic peptide directed towards the C terminal region of human PNM6A
Specificity:	Expected reactivity: Human Homology: Cow: 79%; Human: 100%; Rat: 83%
Formulation:	Liquid. Purified antibody supplied in 1x PBS buffer with 0.09% (w/v) sodium azide and 2% sucrose. <i>Note that this product is shipped as lyophilized powder to China customers.</i>
Concentration:	lot specific
Purification:	Affinity purified
Conjugation:	Unconjugated
Storage:	For short term use, store at 2-8°C up to 1 week. For long term storage, store at -20°C in small aliquots to prevent freeze-thaw cycles.
Stability:	Shelf life: one year from despatch.
Predicted Protein Size:	44 kDa
Gene Name:	paraneoplastic Ma antigen family member 6A
Database Link:	NP_116271 Entrez Gene 84968 Human POCW24
Synonyms:	MA6; MGC15827; PNMA6



[View online »](#)

Product images:



Host: Rabbit
Target Name: PNM6A
Sample Type: Breast Tumor Lysate
Antibody Dilution: 1.0 μ g/ml

Host: Rabbit
Target Name: PNM6A
Sample Tissue: Human Breast Tumor lysates
Antibody Dilution: 1 μ g/ml