

Product datasheet for **TA357714**

TUBA6 (TUBA1C) Rabbit Polyclonal Antibody

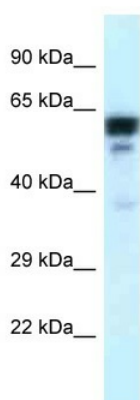
Product data:

Product Type:	Primary Antibodies
Applications:	IHC, IP, WB
Reactivity:	Human, Mouse
Host:	Rabbit
Clonality:	Polyclonal
Specificity:	Expected reactivity: Dog, Human, Mouse, Pig, Rat, Zebrafish Homology: Dog: 100%; Human: 100%; Mouse: 100%; Pig: 100%; Rat: 100%; Zebrafish: 100%
Formulation:	Liquid. Purified antibody supplied in 1x PBS buffer with 0.09% (w/v) sodium azide and 2% sucrose. <i>Note that this product is shipped as lyophilized powder to China customers.</i>
Concentration:	lot specific
Purification:	Affinity Purified
Conjugation:	Unconjugated
Storage:	For short term use, store at 2-8°C up to 1 week. For long term storage, store at -20°C in small aliquots to prevent freeze-thaw cycles.
Stability:	Shelf life: one year from despatch.
Predicted Protein Size:	50kDa
Gene Name:	tubulin alpha 1c
Database Link:	NP_116093 Entrez Gene 22146 Mouse Entrez Gene 84790 Human Q9NY65
Background:	Tubulin is the major constituent of microtubules. It binds two moles of GTP, one at an exchangeable site on the beta chain and one at a non-exchangeable site on the alpha-chain.
Synonyms:	bcm948; MGC10851; MGC14580; TUBA6
Protein Pathways:	Gap junction, Pathogenic Escherichia coli infection

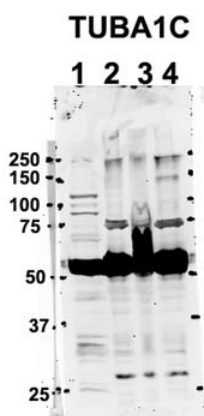


[View online »](#)

Product images:



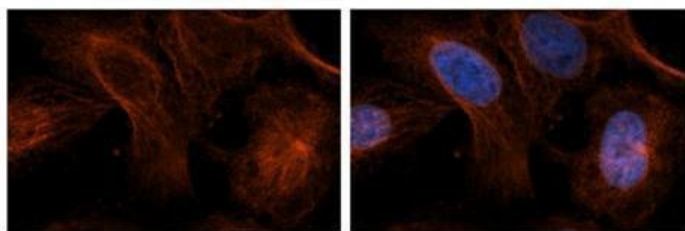
TUBA1^C antibody - C-terminal region (TA357714) validated by WB using Placenta Lysate at 1.0ug/ml.



Sample Type: 1. Human NT-2 cells (60ug)
 2. and 3. mouse brain extracts (80ug)
 4. rat brain extract (80ug)
Primary Antibody Dilution: 2ug/ml
Secondary Antibody: IRDye 800CW goat anti-rabbit from Li-COR Bioscience
Secondary Antibody Dilution: 1: 20,000
Image Submitted by: Yuzhi Chen
 University of Arkansas for Medical Science

See Immunoblot 2 Data for more information.

TUBA1C

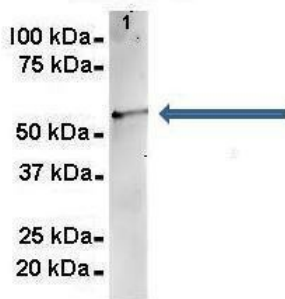


Antibody--RED
DAPI--Blue

See IHC 1 Data and Customer Feedback for more information

Sample Type:
Human brain stem cells
Primary Antibody Dilution:
1:500
Secondary Antibody:
Goat anti-rabbit Alexa-Fluor 594
Secondary Antibody Dilution:
1:1000
Color/Signal Descriptions:
TUBA1C: Red DAPI:Blue
Gene Name:
TUBA1C
Submitted by:
Dr. Yuzhi Chen, University of Arkansas for Medical Science

TUBA1C



See Other Application 2 Data and Customer Feedback for more information

Amount and Sample Type:
500 ug mouse brain homogenate
Amount of IP Antibody:
6 ug
Primary Antibody:
TUBA1C
Primary Antibody Dilution:
1:500
Secondary Antibody:
Goat anti-rabbit Alexa-Fluor 594
Secondary Antibody Dilution:
1:5000
Gene Name:
TUBA1C
Submitted by:
Dr. Yuzhi Chen, University of Arkansas for Medical Science