

## Product datasheet for **TA357710**

### ANGPTL6 Rabbit Polyclonal Antibody

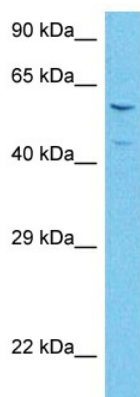
#### Product data:

|                         |  |
|-------------------------|--|
| Product Type:           | Primary Antibodies   |
| Applications:           | WB   |
| Reactivity:             | Human  |
| Host:                   | Rabbit   |
| Clonality:              | Polyclonal   |
| Immunogen:              | The immunogen for Anti-ANGPTL6 antibody is: synthetic peptide directed towards the C-terminal region of Human ANGL6  |
| Specificity:            | <b>Expected reactivity:</b> Cow, Dog, Goat, Guinea Pig, Horse, Human, Mouse, Rabbit, Rat<br><b>Homology:</b> Cow: 100%; Dog: 93%; Goat: 100%; Guinea Pig: 100%; Horse: 100%; Human: 100%; Mouse: 100%; Rabbit: 100%; Rat: 100% |
| Formulation:            | Liquid. Purified antibody supplied in 1x PBS buffer with 0.09% (w/v) sodium azide and 2% sucrose.<br><i>Note that this product is shipped as lyophilized powder to China customers.</i>  |
| Concentration:          | lot specific   |
| Purification:           | Affinity purified  |
| Conjugation:            | Unconjugated   |
| Storage:                | For short term use, store at 2-8°C up to 1 week. For long term storage, store at -20°C in small aliquots to prevent freeze-thaw cycles.  |
| Stability:              | Shelf life: one year from despatch.  |
| Predicted Protein Size: | 51 kDa   |
| Gene Name:              | angiopoietin like 6  |
| Database Link:          | <a href="#">NP_114123.2</a><br><a href="#">Entrez Gene 83854 Human</a><br><a href="#">Q8NI99</a>   |
| Synonyms:               | AGF; ARP5  |



[View online »](#)

## Product images:



Host: Rabbit  
Target Name: ANGL6  
Sample Tissue: Thymus Tumor Lysate  
Antibody Dilution: 1.0 $\mu$ g/ml

Host: Rabbit  
Target Name: ANGL6  
Sample Type: Thymus Tumor  
Antibody Dilution: 1.0 $\mu$ g/ml