

Product datasheet for **TA357704**

YIPF4 Rabbit Polyclonal Antibody

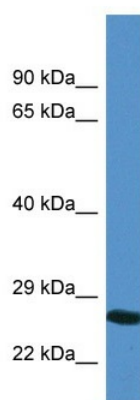
Product data:

Product Type:	Primary Antibodies
Applications:	IHC, WB
Reactivity:	Human
Host:	Rabbit
Clonality:	Polyclonal
Specificity:	Expected reactivity: Cow, Dog, Guinea Pig, Horse, Human, Mouse, Rabbit, Rat Homology: Cow: 100%; Dog: 100%; Guinea Pig: 100%; Horse: 100%; Human: 100%; Mouse: 100%; Rabbit: 100%; Rat: 100%
Formulation:	Liquid. Purified antibody supplied in 1x PBS buffer with 0.09% (w/v) sodium azide and 2% sucrose. <i>Note that this product is shipped as lyophilized powder to China customers.</i>
Concentration:	lot specific
Purification:	Affinity Purified
Conjugation:	Unconjugated
Storage:	For short term use, store at 2-8°C up to 1 week. For long term storage, store at -20°C in small aliquots to prevent freeze-thaw cycles.
Stability:	Shelf life: one year from despatch.
Predicted Protein Size:	27kDa
Gene Name:	Yip1 domain family member 4
Database Link:	NP_115688 Entrez Gene 84272 Human Q9BSR8
Background:	The function of this protein remains unknown.
Synonyms:	FinGER4; MGC11061; Nbla11189
Protein Families:	Transmembrane

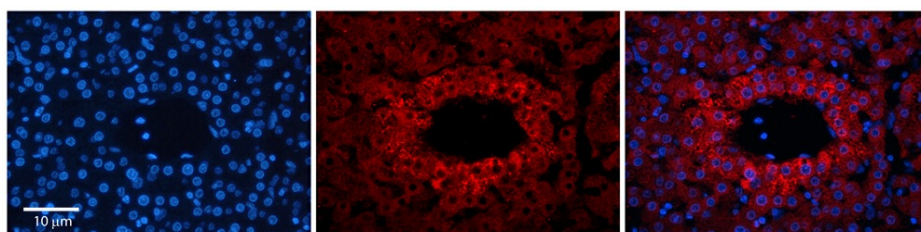


[View online »](#)

Product images:



WB Suggested Anti-YIPF4 Antibody
Titration: 1.0 ug/ml
Positive Control: COLO205 Whole Cell YIPF4 is supported by BioGPS gene expression data to be expressed in COLO205



Rabbit Anti-YIPF4 Antibody
Catalog Number: TA357704
Formalin Fixed Paraffin Embedded Tissue:
Human Adult Liver
Observed Staining: Cytoplasm only in hepatocytes surrounding central vein, strong signal, low tissue distribution
Primary Antibody Concentration: 1:100
Secondary Antibody: Donkey anti-Rabbit-Cy3
Secondary Antibody Concentration: 1:200
Magnification: 20X
Exposure Time: 0.5-2.0 sec
Protocol located in Reviews and Data.