

Product datasheet for **TA357700**

SLC25A33 Rabbit Polyclonal Antibody

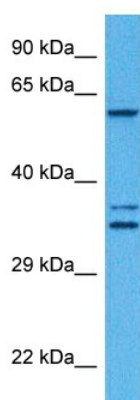
Product data:

Product Type:	Primary Antibodies
Applications:	WB
Reactivity:	Human
Host:	Rabbit
Clonality:	Polyclonal
Immunogen:	The immunogen is a synthetic peptide directed towards the C terminal region of human SLC25A33
Specificity:	Expected reactivity: Human Homology: Cow: 93%; Dog: 100%; Guinea Pig: 100%; Horse: 100%; Human: 100%; Mouse: 86%; Rabbit: 86%; Rat: 100%; Sheep: 93%; Zebrafish: 91%
Formulation:	Liquid. Purified antibody supplied in 1x PBS buffer with 0.09% (w/v) sodium azide and 2% sucrose. <i>Note that this product is shipped as lyophilized powder to China customers.</i>
Concentration:	lot specific
Purification:	Affinity purified
Conjugation:	Unconjugated
Storage:	For short term use, store at 2-8°C up to 1 week. For long term storage, store at -20°C in small aliquots to prevent freeze-thaw cycles.
Stability:	Shelf life: one year from despatch.
Predicted Protein Size:	35 kDa
Gene Name:	solute carrier family 25 member 33
Database Link:	NP_115691 Entrez Gene 84275 Human Q9BSK2
Background:	SLC25A33 belongs to the SLC25 family of mitochondrial carrier proteins.
Synonyms:	BMSC-MCP; HuBMSC-MCP; MGC4399
Protein Families:	Transmembrane



[View online »](#)

Product images:



Host: Rabbit
Target Name: SLC25A33
Sample Type: Stomach Tumor Lysate
Antibody Dilution: 1.0 μ g/ml

Host: Rabbit
Target Name: SLC25A33
Sample Tissue: Human Stomach Tumor lysates
Antibody Dilution: 1ug/ml