

Product datasheet for **TA357699**

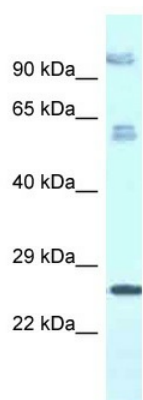
TMEM222 Rabbit Polyclonal Antibody

Product data:

Product Type:	Primary Antibodies
Applications:	WB
Reactivity:	Human
Host:	Rabbit
Clonality:	Polyclonal
Specificity:	Expected reactivity: Cow, Dog, Guinea Pig, Horse, Human, Mouse, Rabbit, Rat, Zebrafish Homology: Cow: 100%; Dog: 100%; Guinea Pig: 100%; Horse: 100%; Human: 100%; Mouse: 100%; Rabbit: 100%; Rat: 100%; Zebrafish: 86%
Formulation:	Liquid. Purified antibody supplied in 1x PBS buffer with 0.09% (w/v) sodium azide and 2% sucrose.
Concentration:	lot specific
Purification:	Affinity Purified
Conjugation:	Unconjugated
Storage:	For short term use, store at 2-8°C up to 1 week. For long term storage, store at -20°C in small aliquots to prevent freeze-thaw cycles.
Stability:	Shelf life: one year from despatch.
Predicted Protein Size:	23kDa
Gene Name:	transmembrane protein 222
Database Link:	NP_115501 Entrez Gene 84065 Human Q9H0R3
Background:	The function of this protein remains unknown.
Synonyms:	C1orf160; DKFZP564D0478; MGC111002
Protein Families:	Transmembrane



[View online »](#)

Product images:


WB Suggested Anti-TMEM222 Antibody
 Titration: 1.0 ug/ml
 Positive Control: Fetal Lung