

Product datasheet for **TA357698**

SLC25A33 Rabbit Polyclonal Antibody

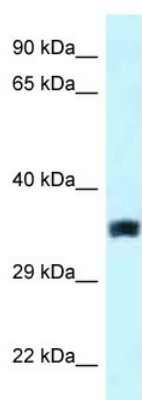
Product data:

Product Type:	Primary Antibodies
Applications:	WB
Reactivity:	Human
Host:	Rabbit
Clonality:	Polyclonal
Specificity:	Expected reactivity: Cow, Dog, Guinea Pig, Horse, Human, Mouse, Rabbit, Rat, Sheep Homology: Cow: 93%; Dog: 93%; Guinea Pig: 93%; Horse: 93%; Human: 100%; Mouse: 86%; Rabbit: 86%; Rat: 100%; Sheep: 93%
Formulation:	Liquid. Purified antibody supplied in 1x PBS buffer with 0.09% (w/v) sodium azide and 2% sucrose. <i>Note that this product is shipped as lyophilized powder to China customers.</i>
Concentration:	lot specific
Purification:	Affinity Purified
Conjugation:	Unconjugated
Storage:	For short term use, store at 2-8°C up to 1 week. For long term storage, store at -20°C in small aliquots to prevent freeze-thaw cycles.
Stability:	Shelf life: one year from despatch.
Predicted Protein Size:	35kDa
Gene Name:	solute carrier family 25 member 33
Database Link:	NP_115691 Entrez Gene 84275 Human Q9BSK2
Background:	SLC25A33 belongs to the SLC25 family of mitochondrial carrier proteins.
Synonyms:	BMSC-MCP; HuBMSC-MCP; MGC4399
Protein Families:	Transmembrane



[View online »](#)

Product images:



WB Suggested Anti-SLC25A33 Antibody
Titration: 1.0 ug/ml
Positive Control: ACHN Whole Cell