

Product datasheet for **TA357687**

Calpain S2 (CAPNS2) Rabbit Polyclonal Antibody

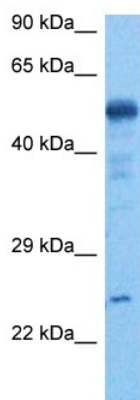
Product data:

Product Type:	Primary Antibodies
Applications:	WB
Reactivity:	Human
Host:	Rabbit
Clonality:	Polyclonal
Immunogen:	The immunogen is a synthetic peptide directed towards the middle region of human CAPNS2
Specificity:	Expected reactivity: Human Homology: Guinea Pig: 100%; Human: 100%; Mouse: 86%; Rabbit: 100%; Rat: 100%
Formulation:	Liquid. Purified antibody supplied in 1x PBS buffer with 0.09% (w/v) sodium azide and 2% sucrose.
Concentration:	lot specific
Purification:	Affinity purified
Conjugation:	Unconjugated
Storage:	For short term use, store at 2-8°C up to 1 week. For long term storage, store at -20°C in small aliquots to prevent freeze-thaw cycles.
Stability:	Shelf life: one year from despatch.
Predicted Protein Size:	27 kDa
Gene Name:	calpain small subunit 2
Database Link:	NP_115706.1 Entrez Gene 84290 Human Q96L46
Synonyms:	CSS2; MGC12536; MGC14804



[View online »](#)

Product images:



Host: Rabbit
Target Name: CPNS2
Sample Type: Gallbladder Tumor Lysate
Antibody Dilution: 1.0µg/ml

Host: Rabbit
Target Name: CPNS2
Sample Tissue: Human Gallbladder Tumor lysates
Antibody Dilution: 1ug/ml