

Product datasheet for **TA357685**

MYPN Rabbit Polyclonal Antibody

Product data:

Product Type:	Primary Antibodies
Applications:	WB
Reactivity:	Human
Host:	Rabbit
Clonality:	Polyclonal
Immunogen:	The immunogen is a synthetic peptide directed towards the N terminal region of human MYPN
Specificity:	Expected reactivity: Human Homology: Cow: 100%; Dog: 86%; Horse: 93%; Human: 100%; Mouse: 86%; Pig: 100%; Rabbit: 100%; Rat: 100%; Yeast: 79%
Formulation:	Liquid. Purified antibody supplied in 1x PBS buffer with 0.09% (w/v) sodium azide and 2% sucrose.
Concentration:	lot specific
Purification:	Affinity purified
Conjugation:	Unconjugated
Storage:	For short term use, store at 2-8°C up to 1 week. For long term storage, store at -20°C in small aliquots to prevent freeze-thaw cycles.
Stability:	Shelf life: one year from despatch.
Predicted Protein Size:	55 kDa
Gene Name:	myopalladin
Database Link:	NP_001243196.1 Entrez Gene 84665 Human Q86TC9-3



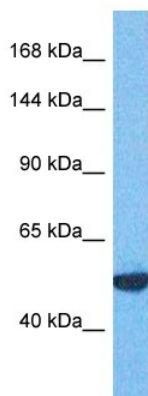
[View online »](#)

Background:

Striated muscle in vertebrates comprises large proteins which must be organized properly to contract efficiently. Z-lines in striated muscle are a sign of this organization, representing the ends of actin thin filaments, titin, nebulin or nebulin and accessory proteins required for structure and function. This gene encodes a protein which interacts with nebulin in skeletal muscle or nebulin in cardiac muscle and alpha-actinin. In addition, this gene product can interact with a protein with the I-band indicating it has a regulatory as well as structural function. Alternative splicing results in multiple transcript variants.

Synonyms:

MYOP; myopalladin

Product images:


Host: Rabbit
Target Name: MYPN
Sample Type: Breast Tumor Lysate
Antibody Dilution: 1.0µg/ml

Host: Rabbit
Target Name: MYPN
Sample Tissue: Human Breast Tumor lysates
Antibody Dilution: 1ug/ml