

## Product datasheet for **TA357684**

### NT5C1A Rabbit Polyclonal Antibody

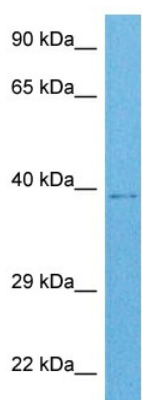
#### Product data:

Product Type:	Primary Antibodies
Applications:	WB
Reactivity:	Human
Host:	Rabbit
Clonality:	Polyclonal
Immunogen:	The immunogen is a synthetic peptide directed towards the N terminal region of human NT5C1A
Specificity:	<b>Expected reactivity:</b> Human <b>Homology:</b> Cow: 93%; Dog: 100%; Guinea Pig: 86%; Horse: 85%; Human: 100%; Mouse: 100%; Pig: 100%; Rat: 100%; Zebrafish: 91%
Formulation:	Liquid. Purified antibody supplied in 1x PBS buffer with 0.09% (w/v) sodium azide and 2% sucrose. <i>Note that this product is shipped as lyophilized powder to China customers.</i>
Concentration:	lot specific
Purification:	Affinity purified
Conjugation:	Unconjugated
Storage:	For short term use, store at 2-8°C up to 1 week. For long term storage, store at -20°C in small aliquots to prevent freeze-thaw cycles.
Stability:	Shelf life: one year from despatch.
Predicted Protein Size:	40 kDa
Gene Name:	5'-nucleotidase, cytosolic IA
Database Link:	<a href="#">NP_115915</a> <a href="#">Entrez Gene 84618 Human</a> <a href="#">Q9BXI3</a>
Background:	Cytosolic nucleotidases, such as NT5C1A, dephosphorylate nucleoside monophosphates Cytosolic nucleotidases, such as NT5C1A, dephosphorylate nucleoside monophosphates.
Synonyms:	CN-I; CN-IA; CN1; cN1A; MGC119199; MGC119201



[View online »](#)

Product images:



Host: Rabbit  
Target Name: NT5C1A  
Sample Type: Lymph Node Tumor Lysate  
Antibody Dilution: 1.0 $\mu$ g/ml

Host: Rabbit  
Target Name: NT5C1A  
Sample Tissue: Human Lymph Node Tumor lysates  
Antibody Dilution: 1  $\mu$ g/ml